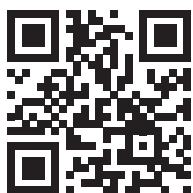


2024.

REFERRING PHYSICIAN QUICK REFERENCE



UAMS.Health/MD

UAMS
Health



MESSAGE FROM DR. KRAUSE

Dear Colleagues,

At the University of Arkansas for Medical Sciences (UAMS), one of our goals is to make Arkansas the healthiest state in the region.

We are grateful for your referrals, which help us provide your patients with the best care and the best resources available. However, I'd like to request your help in furthering that goal by also encouraging your patients to schedule annual wellness exams.

As you know, these exams focus on preventive health screenings, which can detect serious illnesses earlier and offer medical therapies that may impact the risk for disease progression and complications. Additionally, annual wellness visits are a great time for patients to check in with their health team and identify health goals that are important for them to achieve during the year.

Those of you who are primary care physicians have a chance to help your patients and society immeasurably while demonstrating that you care. Establishing a pattern of annual wellness visits also helps nurture close doctor-patient relationships and allows you to better track your patients' health over the years. It gives them the chance to learn how to take responsibility for their long-term health by changing unhealthy habits before irreversible damage occurs.

The beginning of a new year is a good a time to start new habits, and we should be a model to our patients and make sure in our busy lives we don't forget our own annual wellness visits with our primary care team. We can use this time to receive updated immunizations, cancer screenings and mental health assessments, while focusing on health goals.

Let's do it together to create a better state of health.

Sincerely,

Michelle W. Krause, M.D., MPH

Senior Vice Chancellor,
UAMS Health
CEO, UAMS Medical Center
KrauseMichelleW@uams.edu

PHYSICIAN RELATIONS & STRATEGIC DEVELOPMENT

UAMS Physician Relations & Strategic Development serves as liaison between UAMS physicians and community providers. Our goal is to improve the UAMS patient referral process for you and to provide you and your staff with the most up-to-date UAMS resources. Please visit our website for referring physicians: **UAMS.Health/MD**



Michelle W. Krause, M.D., MPH

Senior Vice Chancellor,
UAMS Health
CEO, UAMS Medical Center
(501) 686-8206
KrauseMichelleW@uams.edu



Melanie Meyer, M.Ed.

Director, Physician Relations
& Strategic Development
(501) 686-8206
melanie@uams.edu



Carla Alexander, M.Ed.

Manager, Physician Relations
& Strategic Development
(501) 686-7934
carla@uams.edu



Byron Jarrett

Liaison, Physician Relations
& Strategic Development
(501) 603-1440
byron@uams.edu



Wendy Sheridan

Liaison, Physician Relations
& Strategic Development
(501) 686-6051
wendy@uams.edu

TABLE OF CONTENTS

Physician Resources	2
UAMS Referring Physician Website	2
EpicCare	2
UAMS Physician Call Center	2
SHARE.....	3
Appointment Quick Reference	
Central Arkansas	4
Northwest Arkansas	8
Regional Campuses	9
Interpreter Services	9
UAMS Key Telephone Numbers	10
Learn on Demand.....	11
MedNews Plus	11
Transplant Satellite Clinics	12
Preceptor Opportunities	12
Proton Center	13
UAMS AR ConnectNow: A Virtual Mental Health & Substance Abuse Program	13
AR Research	14
MATRIARC (Medication Assisted Treatment Recovery Initiative for Arkansas Rural Communities)	14
Physician Recruitment & Provider Placement.....	15
UAMS Library Databases & Resources.....	16-17
UAMS Main Campus Map.....	18



Website for Referring Physicians

UAMS.Health/MD

Site includes information on:

- Appointments and Transfers
- CME - LearnOn Demand & MedNews Plus
- *The Consult*
- Referral Resources
- EpicCare Link
- Referring Physician Quick Reference
- Managed Care
- Maps
- Online Appointment Request
- Physician Call Center
- Physician Directory
- Physician Recruitment and Provider Placement
- Physician Relations Staff
- UAMS Library
- Alumni Relations



EpicCare Link

UAMS.Health/EpicCare

New in 2024!

Training Tutorial & New User LearnOnDemand CE Lecture

It is free of charge, easy to sign up and convenient to use.

EpicCare Link is a secure, web-based portal for referring physicians to track patient progress and treatment while at UAMS and provides secure messaging for you to offer electronic consults.

Appointment Requests Now Available!

How to register:

- 1 Visit **UAMS.Health/EpicCare**
- 2 Complete the EpicCare Link access request form
- 3 UAMS IT will e-mail your user name and password



Physician Call Center

Transfers and Consults **501-686-6080**

*Direct Number to the **Physician Call Center***

The **Physician Call Center** is staffed by experienced telephone triage RNs - **24/7, 365 days of the year.**

The Call Center nurse will ensure timely, appropriate consults for your patients, assist you with transfer requests and keep you updated when patient transfers are delayed.

You may still call 866-826-7362 or 501-686-8000 to access the Call Center, the Appointment Center, hospital operators and other areas.



ShareArkansas.com

UAMS is pleased to announce its continued partnership with the Arkansas Department of Health, Office of Health Information Technology in facilitating the implementation of SHARE (the Arkansas State Health Alliance for Records Exchange), the only statewide health information exchange (HIE).

SHARE securely gathers your medical information from different health care providers and creates a more complete picture of a patient's health. Our goal is to improve the quality of health for Arkansas by enabling a more effective use of secure electronic health information exchange while improving the delivery of health care services. Visit SHAREarkansas.com to learn more!

Anne Santifer, Executive Director

anne.santifer@arkansas.gov
501.410.1999

Justin Villines, HIT Policy Director

justin.villines@arkansas.gov
501.537.8924

For more information about SHARE and how to sign up, go to: sharearkansas.com.



UAMS Baptist Health Cancer Center

Two of Arkansas' most trusted names in health care are now delivering comprehensive cancer care together.

The **UAMS Baptist Health Cancer Center** — is located on the Baptist Health North Little Rock campus. We offer advanced cancer treatments with the academic medicine difference, including unique clinical trials led by cancer specialists from the UAMS Winthrop P. Rockefeller Cancer Institute.

Services include:

- Medical Oncology
- Infusion Services
- Radiation Therapy

For more information, visit UAMSBaptist.Health/Cancer

Medical Oncology and Infusion Clinic Referrals: 501-214-2170, Fax: 501-214-2171
Springhill Drive, Suite 340, North Little Rock, AR 72117

Radiation Therapy Center Referrals: 501-214-2460, Fax: 501-214-2461

APPOINTMENT QUICK REFERENCE

CENTRAL ARKANSAS

ALLERGY & IMMUNOLOGY

501-214-2400

New Patients: 866-826-7362
or 501-526-1020

Referrals & Records Fax: 501-686-8232

Return Patients: 501-614-2948

AUDIOLOGY

501-686-5878, Option 1

Referrals & Records Fax: 501-603-1539

- Hearing tests, Balance studies, Hearing aids

CARDIOLOGY/ELECTROPHYSIOLOGY

New Patient: 866-826-7362 or 501-526-1020

Referrals & Records Fax: 501-603-1538

Clinic: 501-686-5311, Option 3

Advanced Heart Failure

Email AHF@UAMS.EDU

Fax #501-686-8321

Phone #501-526-5589

CARDIOTHORACIC SURGERY

501-296-1200

Referrals & Records Fax: 501-603-1538

Return Patients: 501-686-8211

CARDIOTHORACIC SURGERY - ACH

501-364-5858

ACUTE CARE HEART CENTER

501-398-3698

DERMATOLOGY

New Patients: 866-826-7362 or 501-526-1020

Referrals & Records Fax: 501-603-1538

Return Patients: 501-686-5960

DERMATOLOGY ONCOLOGY

501-686-8275

Referrals & Records Fax: 501-603-1550

DIAGNOSTIC CLINIC

866-826-7362 or 501-526-1010

Referrals & Records Fax: 501- 603-1537

EMERGENCY MEDICINE

Emergency Room: 501-526-2085

ENDOCRINOLOGY

866-826-7362 or 501-526-1020

Referrals & Records Fax: 501- 296-1224

Return Patients: 501-296-1220
or 501-214-2400

ENDOCRINE SURGERY

New Patients: 501-526-1030

Referrals & Records Fax: 501-686-7280

Return Patients: 501-686-6086

THYROID ONCOLOGY

New Patients: 501-686-8224

Return Patients: 501-686-8224, option 1

MEDICAL WEIGHT MANAGEMENT CLINIC

Call 1-866-UAMS DOC (866-826-7362)
or 501-686-8000

FAMILY & PREVENTIVE MEDICINE

FAMILY MEDICAL CENTER

501-686-6560

NEIGHBORHOOD CLINICS

- CAPITOL MALL

1401 W. Capitol Ave., Little Rock, AR 72201
501-320-7000

- MAUMELLE

102 Town Centre Dr, Maumelle, AR 72113
501-614-2470

- RAHLING ROAD

1811 Rahling Road Ste 120, Little Rock, AR 72223
501-214-2360

GASTROENTEROLOGY

501-603-1900

Referrals & Records Fax: 501-603-1539

ADVANCED ENDOSCOPY

501-526-0865

Referrals & Records Fax: 501-603-1533

GENERAL INTERNAL MEDICINE

866-826-7362 or 501-526-1010

Referrals & Records Fax: 501- 603-1537

GENETICS

501-526-4020

Referrals & Records Fax: 501- 603-1550

GERIATRICS

501-686-6219

Referrals & Records Fax: 501-603-1537

HEMATOLOGY/ONCOLOGY

New or Returning Patients: 501-296-1200

Referrals & Records Fax: 501-603-1550

UAMS BAPTIST HEALTH CANCER CENTER MEDICAL ONCOLOGY CLINIC

3401 Springhill Dr., Suite 340

North Little Rock, AR 72117

501-214-2170

Referrals & Records Fax: 501-214-2171

INFECTIOUS DISEASES

501-603-1616

Referrals & Records Fax: 501-320-7792

MEDICAL WEIGHT MANAGEMENT CLINIC

Phone 501-526-7877

Fax 501-526-7354

Referrals & Records Fax: 501-526-7354

Return Patients: 501-526-7877

MOVEMENT DISORDER CLINIC

Clinic: 501-526-5364

Referrals & Records Fax: 501-603-1539

MULTIPLE MYELOMA

New Patients: 501-686-8230

Return Patients: 501-686-8230

Referrals & Records Fax: 501-603-1550

NEPHROLOGY-KIDNEY CLINIC

New Patients: 866-826-7362 or 501-526-1020

Referrals & Records Fax: 501-667-7936

Return Patients: 501-661-7910

NEUROLOGY

EPILEPSY & NEUROLOGY CLINIC

501-686-5838

Referrals & Records Fax: 501-603-1539

NEUROSURGERY

NEUROSURGERY & SPINE CLINIC

501-686-5270

Referrals & Records Fax: 501-603-1539

OBSTETRICS/GYNECOLOGY

ANGELS CALL CENTER

501-526-7425 or 866-273-3835

Referrals & Records Fax ANGELS 501-526-7287

UAMS HEALTH WOMEN'S CENTER (OB/GYN, VULVAR DISORDERS)

866-826-7362 or 501-526-1050

Referrals & Records Fax:

Womens: 501-603-1543

GYNECOLOGIC ONCOLOGY

New Patients: 501-686-5669 option 3

Return Patients: 501-686-5669 option 2

OPHTHALMOLOGY

501-686-5822

Referrals & Records Fax: 501-526-6780

ORTHOPAEDICS & SPORTS MEDICINE

**Little Rock (Autumn Road, Colonel
Glen & Shackelford) & North Little Rock**

866-826-7362 or 501-526-1046

Referrals & Records Fax: 501-603-1541

ORTHOPAEDIC ONCOLOGY

501-296-1200

ORTHO SPINE

501-686-5270

Referrals & Records Fax: 501-686-7928

ACH patients: 501-364-2946

UAMS BAPTIST HEALTH ORTHOPAEDIC CLINIC IN CONWAY

501-358-6792

Referrals & Records Fax: 501-358-6841

OTOLARYNGOLOGY

ENT CLINIC

New Patients:

866-826-7362 or 501-526-1030

Referrals & Records Fax: 501 603-1539

Return Patients: 501-686-5878

HEAD & NECK CLINIC

New Patients: 501-296-1200

Return Patients: 501-686-8224

APPOINTMENT QUICK REFERENCE

CONWAY ENT CLINIC

501-932-7600

Referral & Records fax: 501-932-7603

PAIN CLINIC

INTERVENTIONAL 501-686-8818

Referrals & Records Fax: 501-526-4216

PALLIATIVE CARE CLINIC

New and Return Patients: 501-686-8738

PATHOLOGY

888-233-0327 or 501-603-1178

FNA Appointments: 501-686-5655

PEDIATRICS

800-777-7700 or 501-364-5901

PHYSICAL MEDICINE & REHABILITATION

501-221-1311

Referrals & Records Fax: 501-603-1541

PROTON CENTER OF ARKANSAS

501-664-4568

PSYCHIATRIC RESEARCH INSTITUTE

501-526-8100

CENTER FOR ADDICTION SERVICES AND TREATMENT

501-526-8400

CHILD STUDY CENTER

501-364-5150 (ACH campus)

Referrals & Records Fax:

Child Study: 501-603-1840

COUPLES CENTER

501-526-8200

INPATIENT PSYCHIATRY

501-686-6080 (UAMS Call Center)

INTERVENTIONAL PSYCHIATRY/ECT

501-526-8603

INTERVENTIONAL PSYCHIATRY/TMS

501-526-8267

NEUROPSYCHOLOGY

501-526-8364

STRIVE

501-771-8261

WALKER FAMILY CLINIC

501-526-8200

WOMEN'S MENTAL HEALTH CLINIC

501-526-8201

PULMONARY

866-826-7362 or 501-526-1020

Referrals & Records Fax: 501-603-1480

Clinic: 501-603-1400

RADIATION ONCOLOGY (ROC)

New Patients: 501-664-4568

Referrals & Records Fax: 501- 614-9880

Return Patients: 501-664-4568

UAMS BAPTIST HEALTH - RADIATION THERAPY CENTER

3401 Springhill Drive, Suite 13

North Little Rock, AR 72117

501-214-2460

Referrals & Records Fax: 501-214-2461

RADIOLOGY

INPATIENT, BONE SCAN, MUGA

501-686-6661

OUTPATIENT APPOINTMENTS 501-686-6190

CT 501-686-5777

INTERVENTIONAL RADIOLOGY 501-686-6124

MAMMOGRAPHY 501-526-6100

MRI 501-686-6033

NUCLEAR MEDICINE 501-686-6661

NEURO-INTERVENTIONAL RADIOLOGY

501-686-5745

PET 501-526-6526 or 501-686-8424

ULTRASOUND 501-686-5763

REHABILITATION SERVICES

HAND THERAPY 501-686-6102
PT/OT 501-661-7955

SPEECH PATHOLOGY 501-686-8378
Referrals & Records Fax: 501-603-1541

RHEUMATOLOGY

501-603-1919
Referrals & Records Fax: 501-526-7506

Clinic: 501-603-1919

SLEEP CLINIC

Clinic: 501-686-6443
Referrals & Records Fax: 501-603-1538

SURGERY

Pre-Op & Evaluation: 501-603-1211
Referrals & Records Fax: 501-686-7618

BREAST ONCOLOGY

501-296-1200
Referrals & Records Fax: 501-603-1550
Return Patients: 501-686-8522

COLORECTAL SURGERY 501-686-8211
Referrals & Records Fax: 501-603-1550

ENDOCRINE SURGERY

New Patients: 501-526-1030
Return Patients: 501-686-6086
Referrals & Records Fax: 501-686-7280

GENERAL SURGERY 501-526-1030
Referrals & Records Fax: 501-603-1539

GENERAL SURGERY - ACH 501-364-1446

HEPATO-PANCREATO-BILIARY SURGERY

New Patients: 501-296-1200
Referrals & Records Fax: 501-603-1550
New patient E-mail: UAMShpb@uams.edu
Return Patients: 501-686-8211

LUNG CANCER

New Patients: 501-296-1200
Referrals & Records Fax: 501-603-1550
Return Patients: 501-686-8211

PLASTIC

New Patients: 501-686-8711
Referrals & Records Fax: 501-603-1539
Return Patients: 501-526-1030

PLASTIC - ACH 501-364-1195

SURGICAL ONCOLOGY - GENERAL

501-296-1200
Referrals & Records Fax: 501-603-1550
Return Patients: 501-686-8211

VASCULAR SURGERY 501-686-6176
Referrals & Records Fax: 501- 686-5328

TRANSPLANT

1-800-552-8026

KIDNEY 501-686-6640
Referrals & Records Fax: 501-686-6375

LIVER 501-686-8962
Referrals & Records Fax: 501-686-5215

SATELLITE CLINICS

Fayetteville, Fort Smith, Helena, Jonesboro,
Texarkana & Pine Bluff
Pine Bluff scheduling: 870-541-6000
Referral & Records fax: 870-541-7618

UROLOGY

10915 Rodney Parham Road, Suite F
Little Rock, AR 72212
New Patients: 501-526-1030
Referrals & Records Fax: 501- 603-1539
Return Patients: 501-686-6324

GENITOURINARY ONCOLOGY

New Patients: 501-296-1200
Return Patients: 501-526-1045

UROLOGIC PROSTHETICS

New Patients: 866-826-7362 or 501-526-1030
Return Patients: 501-686-6324

APPOINTMENT QUICK REFERENCE

NORTHWEST ARKANSAS

ADULT GENETICS

1125 N. College Ave.
Fayetteville, AR 72703
501-526-4020

Referrals & Records Fax: 501-526-4029

FAMILY MEDICAL CENTER

Fayetteville

1125 N. College Ave.
Fayetteville, AR 72703
479-521-8260

Referrals & Records Fax: 479-443-3903

Springdale

601 W. Maple Ave., Suite 102
Springdale, AR 72764
479-750-6585

Referrals & Records Fax: 479-750-6594

SCHMIEDING KIDS FIRST

2575 S. Gene George Blvd.
Springdale, AR 72762
479-750-0130

Referrals & Records Fax: 479-750-0937

NEIGHBORHOOD CLINIC – INTERNAL MEDICINE

1125 N. College Avenue
Fayetteville, AR 72703
479-713-8701

Referrals & Records Fax: 479-713-8719

NORTH STREET CLINIC

1125 N. College Ave.
Fayetteville, AR 72703
479-713-8701

Referrals & Records Fax: 479-713-8719

BUTTERFIELD TRAIL VILLAGE CLINIC

1923 Joyce Blvd.
Fayetteville, AR 72703
479-713-5230

Referrals & Records Fax: 479-332-4405

ORTHOPAEDICS & SPORTS MEDICINE CLINIC

FAYETTEVILLE

201 W. Van Asche Loop
Fayetteville, AR 72703
479-966-4491

Referrals & Records Fax: 479-966-4311

LOWELL

507 W Monroe Ave., Lowell, AR 72745
479-334-7030

Referrals & Records Fax: 479-966-4311

OUTPATIENT THERAPY

Northwest Campus – Fayetteville

1125 N. College Ave.
Fayetteville, AR 72703
479-713-8630

Referrals & Records Fax: 479-713-8639

Schmieding Center – Springdale

2422 N Thompson St.
Springdale, AR 72764
479-713-8630

Referrals & Records Fax: 479-713-8639

Train Recover Move (TRM) – Fayetteville

201 W Van Asche Drive
Fayetteville, AR, 72703
479-966-4055

Train Recover Move (TRM) – Rogers

2530 Pinnacle Hills Parkway, Suite 200
Rogers, AR, 72758
479-966-4055

Hand Therapy Clinic – Lowell

507 W. Monroe Ave.
Lowell, AR 72745
479-334-7030

PSYCHIATRIC RESEARCH INSTITUTE

3425 N. Futrall
Stephens Bldg
First Floor, Suite 103
Fayetteville, AR 72703
479-713-8350

Referrals & Records Fax: 501-526-5296

ONLINE APPOINTMENT SCHEDULING: UAMS.Health/MD

SCHMIEDING DEVELOPMENT CENTER - LOWELL

2575 S. Gene George Blvd., Suite 100
Springdale, AR 72762
Referrals & Records Fax: 479-750-0323

REGIONAL CAMPUSES

UAMS NORTH CENTRAL BATESVILLE

Family Medicine Residency Program
1993 Harrison St.
Batesville, AR 72501
Phone: 870-793-2540

UAMS NORTHWEST FAYETTEVILLE

Family Medicine
Residency Program
1125 N. College Ave.
Fayetteville, AR 72703
479-521-8260 (Fayetteville)
479-750-6585 (Springdale)

UAMS WEST FORT SMITH

Family Medicine
Residency Program
1301 South E St.
Fort Smith, AR 72901
479-785-2431

UAMS EAST HELENA-WEST HELENA

1393 Highway 242 South
Helena-West Helena, AR 72342
870-572-6507

UAMS NORTHEAST JONESBORO

Family Medicine Residency Program
311 East Matthews Ave.,
Jonesboro, AR 72401
870-972-0063

UAMS SOUTH MAGNOLIA

1617 North Washington St.
Magnolia, AR 71753
870-234-7676

UAMS SOUTH CENTRAL PINE BLUFF

Family Medicine Residency Program
1601 West 40th Ave.
Pine Bluff, AR 71603
870-541-6000

UAMS SOUTHWEST TEXARKANA

Family Medicine Residency Program
3417 U of A Way
Texarkana, AR 71854
870-779-6000

UAMS Institute for Digital Health & Innovation INTERPRETER PROGRAM

***Now serving other health care facilities
and clinics throughout Arkansas!***

Since 2010, the Institute for Digital Health & Innovation **IDHI Interpreter Program** has served nearly 100 clinics and departments at UAMS.

The program facilitates communication between patients, families and health care professionals. Interpreters have a high level of competence and experience.

For more information, call 501-526-0399, or email us at IDHI@UAMS.edu.

KEY TELEPHONE NUMBERS

TRANSFER NUMBERS

*UAMS Physician Call Center
501-686-6080 or 866-UAMS-DOC

Appointment Center.....501-526-1000

All numbers are area code 501 unless listed otherwise.

Hospital

Department Phone Numbers

Administration603-1452
Admissions 686-6236
Admission Assessment Area526-3661
Arkansas Poison Center1-800-3POISON
Bed Control (Resource Mgmt.) 686-5641
Breast Center 526-7300
 Clinical Decision Unit 686-7557
Care Management 686-5870
Cath Lab526-3280
Clinical Command Center.....603-1000
Clinical Lab (for results) 686-6230
Dialysis.....526-3750
Emergency Department526-2085
 Clinical Decision Unit..... 686-7557
Hand Therapy Rehabilitation 686-6102
Hospital Operator686-7000
Interventional Radiology686-6124
Kidney Transplant686-6640
Liver Transplant..... 686-8962
Medical Records 603-1520
Occupational Therapy Inpatient ... 686-6120
One Day Surgery320-7168
OR Front Desk526-3200
PACU (recovery room) 526-3242
Patient Relations/Advocate296-1039
Patient Safety.....296-1039
Pharmacy (inpatient)686-6221
Pharmacy (outpatient) 686-5530
Physical Therapy Inpatient 686-6120
Physical & Occupational Therapy Outpatient
 At Spine Institute 661-7955
 At Aging Institute526-5770
Physician Relations.....603-1440
Pre-Op 526-3240
Psychiatric Research Institute526-8200
Quality Management..... 296-1325

Radiology.....686-5750
Respiratory Manager's pager405-8059
 Office 686-7200
Risk Management.....296-1039
Security (UAMS Police)..... 686-7777
Speech Therapy (Outpatient)686-8378
Speech Therapy (Inpatient) 686-6120
Surgery (Info).....686-7653
Scheduling (Main OR) 614-2900 x1101/x1102
The Orthopedic & Spine Hospital (TOSH)
 686-8674

Nursing Units

Emergency Room526-2085
A7 Antepartum686-7750
E4 Medical/Neuro ICU..... 526-0400
E5 LDR/Triage526-0500
E6 Perinatal Unit..... 526-0600
E7 Medical Oncology Overflow...526-0700
F7 Medical Oncology Transplant .526-1700
F4 Progressive Care.....526-1400
F5 Neonatal ICU..... 526-1500
F6 Cardiac Progressive Clinic..... 526-1600
F8 Cardiac Progressive Care 526-1800
F9 Surgical Specialties..... 526-1900
H4 TSICU/CVICU.....526-3400
H5 Neonatal ICU 526-1500
H6 Short Stay526-3600
H7 Medical Oncology 526-3700
H8 Neurology / Neurosurgery 526-3800
H9 Nephrology/Surgical Svs.....526-3900
TOSH..... 686-8031

Other/Campus

Chancellor's Office686-5680
Chief Clinical Officer686-8113
Creative Services.....686-5570
Dean's Office 686-5350
FGP Claims Management..... 614-2082
IT Help Desk.....686-8555
Public Safety.....686-7777

FREE ONLINE CME

LearnOnDemand Tuesday Noon CE Series



This weekly, multidisciplinary Tuesday Noon teleconference focuses on chronic disease, health care trends and interprofessional collaboration. All disciplines are welcome and encouraged to participate.

LearnOnDemand (LOD), a product developed under the Institute for Digital Health & Innovation (IDHI), allows users to track all their educational hours and credits earned inside or outside the program.

LearnOnDemand.org is the website portal that allows health care professionals, at any time, to hear lectures and take classes online to earn continuing education (CE) credits.

The content on this site is compliant with the CE requirements for all three national accrediting organizations for physicians, nurses and pharmacists. Among the other health professions to which LOD is approved to offer continuing education are health educators, registered dietitians, case managers, lactation consultants, physical therapists, respiratory therapists and emergency medical technicians. Many courses on LearnOnDemand.org have been approved for CE Credit.

For information regarding LearnOnDemand and what it can offer you contact:
idhi@uams.edu | 1-855-234-3348

Accreditation Statement: In support of improving patient care, this activity has been planned and implemented by University of Arkansas for Medical Sciences. University of Arkansas for Medical Sciences is jointly accredited by the Accreditation Council for Continuing Medical Education (ACCME), the Accreditation Council for Pharmacy Education (ACPE), and the American Nurses Credentialing Center (ANCC), to provide continuing education for the healthcare team.

AMA Credit Designation: The University of Arkansas for Medical Sciences designates this live activity for a maximum of 1 AMA PRA Category 1 Credit(s)™. Physicians should claim only the credit commensurate with the extent of their participation in the activity.

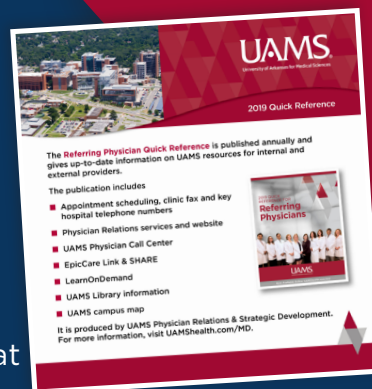
MedNews Plus

is an email news subscription that provides medical professionals with:

- **Breaking medical news and conference coverage:**
 - according to specialty
 - pulled from over 300 sources, including over 100 of the top medical journals and over 100 of the top medical meetings that take place around the world each year.
- **Nearly 800 hours of AMA PRA Category 1™ CME credit for physicians each year (nearly 1,000 hours of CE for nurses annually),**
- **Important UAMS news and updates.**

MedNews Plus is available for all medical professionals, including practice managers, who can sign up as a “health administrator” and follow the “practice management” topic. Subscribers will receive a morning email, branded as UAMS, only when there is breaking medical news in the specialty(s) to which they subscribe. They can edit their subscription or unsubscribe at any time.

To register, visit UAMS.MedNewsPlus.com.



UAMS HEALTH TRANSPLANT SATELLITE CLINICS

UAMS is the home of Arkansas' only adult kidney and liver transplant center.

With transplants beginning in 1964 with the state's first kidney transplant. UAMS also performed the state's first liver transplant in 2005. The UAMS Organ Transplant team has performed more than 1,800 kidney transplants and over 400 liver transplants.

UAMS has achieved wait times among the shortest in the nation for kidney and liver transplants, as well as patient outcomes that consistently exceed national benchmarks.

Services provided:

- Liver, Kidney and Pancreas care
- Dialysis Access Evaluation
- Liver, Pancreatic & Cancer Evaluation and Care
- Management of Disorders of the bile ducts
- Liver Failure/Liver Dysfunction care

Transplant patients are seen at the following UAMS Health Family Medical Center locations:

- **Fayetteville**
- **Fort Smith**
- **Jonesboro**
- **Helena**
- **Texarkana**
- **Pine Bluff**

UAMS Kidney Transplant Program ranks in the top 5 centers in the nation for renal transplant.

- 1st in the Nation on patient survival 1 year after transplant
- 4th in the Nation in getting waitlisted patients transplanted faster

UAMS Liver Transplant Program ranks in the top 5 centers in the nation for liver transplant.

- 1st in the Nation on patient survival while on the waitlist
- 2nd in the Nation in getting our waitlisted patients transplanted faster

Preceptor Opportunities *We need you!*



- Are you board certified?
- Do you enjoy teaching medical students?
- Do you want to train your next partner?

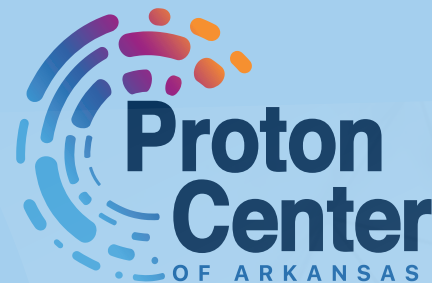
PARTICIPATING PHYSICIANS RECEIVE:

- 20 hours AAFP prescribed credit
- UAMS adjunct faculty appointment
- Free online CME through UAMS LearnOnDemand
- Digital access to the UAMS Library, UpToDate, PubMed, Medline and more
- 10 hours Part 4 MOC credit

For more information or to sign up: **Jessica Bursk**
JLBURSK@UAMS.EDU | 501-686-5260

Introducing Proton Therapy

The most advanced radiation treatment for children and adults with hard-to-reach tumors



ARKANSAS CHILDREN'S • BAPTIST HEALTH
UAMS HEALTH • PROTON INTERNATIONAL

The Proton Center of Arkansas at the new and expanded UAMS Health Radiation Oncology Center offers the most advanced form of radiation therapy in the world today. Proton therapy has unique dose characteristics that deliver cancer-killing radiation within millimeters of accuracy to a tumor with less collateral dose to healthy tissues and vital organs.

If you have a patient you would like us to evaluate for proton therapy, please call us at 501-664-4568.

Scan the QR code
to access clinical
studies from proton
experts.



**UAMS.Health/
ProtonReferral**

AR ConnectNow A VIRTUAL MENTAL HEALTH PROGRAM

UAMS Health AR ConnectNow is there for you, whenever you need it.

The University of Arkansas for Medical Sciences (UAMS) AR ConnectNow call center is open 24 hours a day, seven days a week, answering the needs of Arkansans dealing with any number of mental health issues. The caller is evaluated by a nurse triage team and, if needed, contacted by another medical professional within 24 hours. The contact will be by live video. The virtual clinic operates Monday through Friday, 8 a.m. to 5 p.m.



A Virtual Mental Health and
Substance Abuse Program

For more information, email ARconnectnow@uams.edu or visit uamshealth.com/ar-connectnow

**Call (501) 526-3563 or toll-free at (800) 482-9921
to speak to a medical professional.**

Help Connect Arkansans with UAMS Health Research ARresearch.org

Arkansans have a simple way to participate in health-related studies thanks to **ARresearch.org**, an innovative program of the UAMS Translational Research Institute.

This online registry, also available in Spanish, now includes more than 9,300 Arkansans from all 75 counties.

When filling out the form, registrants choose from 31 health interest areas, such as COVID-19, weight management, cancer, heart disease and a healthy volunteer option. UAMS researchers may invite registrants to participate if their study aligns with the registrants' selected health interest areas.

Many studies, such as online surveys, do not require travel, and some provide convenience with procedures conducted at UAMS Regional

Campuses. Compensation is also provided in many studies.

The ARresearch registry form takes less than five minutes to complete and does not obligate any registrant to participate in a study. Volunteers may also leave a study at any time.

As the state's only academic medical center, UAMS conducts translational research that benefits communities in Arkansas and beyond. Study volunteers are crucial for helping researchers meet their enrollment goals and improving the quality of their findings.

Please help spread the word to your patients and others about this unique opportunity.

For more information, visit ARresearch.org or TRI.uams.edu. Questions? Contact Pam Christie, PChristie@uams.edu.



MATRIARC MEDICATION ASSISTED TREATMENT RECOVERY INITIATIVE FOR ARKANSAS RURAL COMMUNITIES

MATRIARC (Medication Assisted Treatment Recovery Initiative for Arkansas Rural Communities)

is a partnership with the UAMS Psychiatric Research Institute and the Arkansas Department of Human Services designed to expand evidence-based treatment for opioid use disorders.

An addiction psychiatrist is available free of charge via telephone to offer consultations to primary care physicians, general psychiatrists, advanced practice nurses, physician assistants and mental health professionals providing medication-assisted treatment to patients dealing with opioid use disorder.

The service is available Monday through Friday, from 8:30 a.m. to 4:30 p.m., excluding state holidays.
Call 501-526-8459 or 833-872-7404 to speak to a trained addiction specialist.



MedJobArkansas.com

Physician Recruitment and Provider Placement

The UAMS Physician Recruitment and Provider Placement Program has a team of Placement Specialists dedicated to serving the recruitment needs of UAMS, UAMS Regional Programs and our partner communities by:

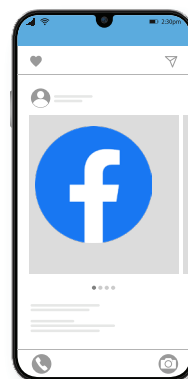
- Assisting with the development of detailed profiles of available opportunities
- Promoting practice opportunities to UAMS residents and practicing physicians
- Utilizing national and local internet job boards
- Attending regional and virtual career fairs
- Referring candidates to partnering communities
- Providing professional development training to community hospitals and providers through LOD

Contact **Carla Alexander** at **501-686-7934** or **carla@uams.edu** for details on the MedJobArkansas Contract.

Candidate Opportunities & Resources

The Physician Recruitment and Provider Placement Program is available to assist candidates with professional development training and provide practice opportunities available throughout Arkansas.

Find detailed opportunities and register on the Job Board at **medjobarkansas.com**. CV tips, templates, and samples are available on the site.



Follow us on Social Media

UAMS Library Databases & Resources

Do you need to search the current clinical literature or find information on clinical trials? The following databases provided by the U.S. National Library of Medicine (NLM) or the National Cancer Institute (NCI) are available free online:

MEDLINE via PubMed.gov (NLM)

- Includes over 36 million citations in biomedical & life sciences journal literature.
- Indexed records go back to 1946.
- Some older records may go back to late 1700s.
- Some free full text is available.

PDQ (Physicians Data Query) via Cancer.gov (NCI)

- Includes comprehensive evidence-based information about cancer treatment, screening, prevention, genetics, and supportive care plus over 8,000 open NCI clinical trials.
- Provides a genetic services directory.
- Most summaries available in Spanish. A to Z list of Summaries <https://www.cancer.gov/publications/pdq/information-summaries/adult-treatment>

ClinicalTrials.gov (NLM) ClinicalTrials.gov

- Provides current information for locating federally and privately supported clinical trials for diseases and conditions in humans.
- Includes trial's purpose, who may participate, locations (U.S. and International) and contacts.
- Filters for finding studies with results are available.

PubChem (NLM) <https://pubchem.ncbi.nlm.nih.gov/>

- An open chemistry database with information on chemical structures, identifiers, chemical and physical properties, biological activities, patents, health, safety, toxicity data, & others.
- PubChem accepts data submissions about chemical structures, annotations, and associated bioassay test results.

Drugs, Herbs & Supplements (NLM)

- Provides effectiveness, dosage, and drug interactions for dietary supplements and herbal remedies medlineplus.gov/druginformation.html

DailyMed (NLM)

- FDA labels for 144,113 marketed drugs and biological products dailymed.nlm.nih.gov

ADDITIONAL DATABASES

- For a list of free biomedical resources for Arkansas health professionals, see: <http://libguides.uams.edu/services-to-state/ark-healthcare-professionals>

UAMS Library's COVID-19 Resources page <https://libguides.uams.edu/COVID-19> (Est. 1-2020) provides information for health professionals, librarians, educators, researchers, the public, and more.

FULL TEXT ARTICLES

Do you need free full text articles or the ability to order documents from a medical library? The following options are available:

Free Full Text

PubMed pubmed.gov

- Some free full text articles ARE available via PubMed Central buttons.
- Use the free full text filter on the left navigation bar.

Directory of Open Access Journals www.doaj.org

- Covers free, full text, quality-controlled scientific and scholarly journals from 136 countries.
- Currently there are 20,219 journals within 20 subjects.
- The Medicine section has 16 subsections including OB/GYN, internal medicine, pediatrics, pharmacy, surgery, and others.

Full Text Access

PubMed www.pubmed.gov

- Includes many links to publishers' sites [usually require paid subscription].

Interlibrary Loans (ILLs) <https://libguides.uams.edu/ill-edd/home>

- Must have an account with the UAMS Library or a UAMS Regional Center library (Fee-based).
- Includes ILLs from other medical libraries outside of Arkansas.
- Contact the ILL Office at 501-686-6744 or LibraryInterLibraryLoan@uams.edu.
- See regional center map and contact information at: <http://libguides.uams.edu/services-to-state/regional-center-libraries>

TRAINING

Would you like to learn how to use PubMed & other clinical and patient education resources to the best of your ability?

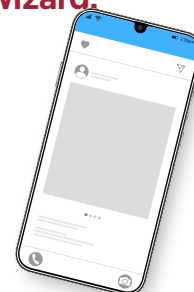
- The UAMS Library offers free training for individuals or groups on these resources.
- Contact the Education & Research Services Department at: 501-686-6734.
- Remote training sessions are available via Zoom. You can also request a class via: <https://uams.libwizard.com/f/class-instruction-request>

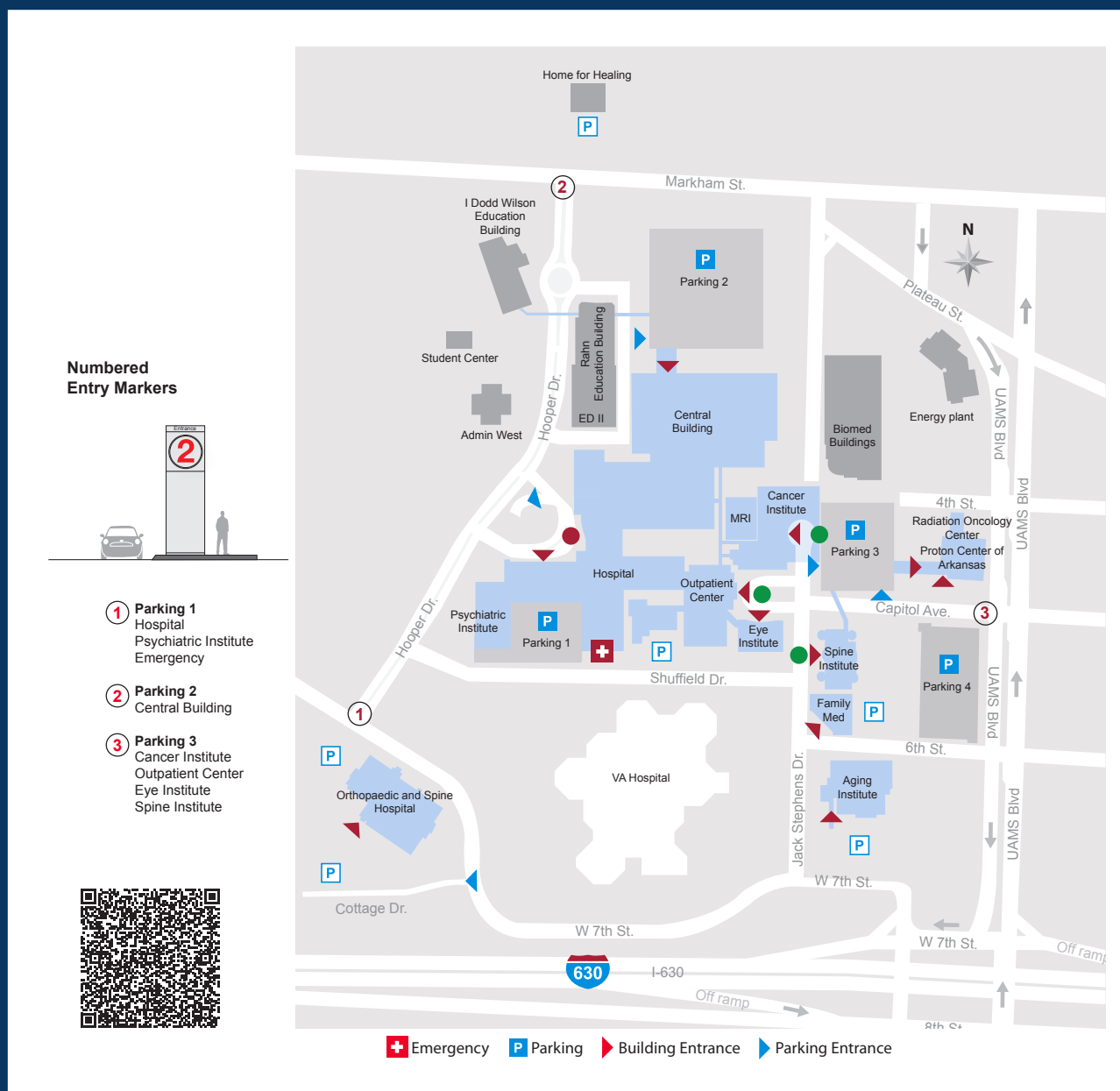
TIME A PROBLEM?

If you don't have time to do searches yourself or cannot find what you're looking for, contact the UAMS Librarians who can provide FREE expert literature searches. Contact us at 501-686-6734.

- To request a Literature Search visit the online form: <https://uams.libwizard.com/f/literature-search-request>
- Results include search strategies, citations and abstracts.
- We also provide free consultations to help with auto alerts or reference questions.

Follow us on Facebook, Twitter, or Instagram
@UAMSLibrary for news about the Library and biomedical
information resources.





For more UAMS locations and maps,
please visit UAMS.Health/Maps

UAMS®