

Referring Physician QUICK REFERENCE

20 25



MESSAGE FROM DR. KRAUSE

Dear Colleagues,

Thank you for your commitment to the health and well-being of your patients and your community. UAMS Health is here to support you in these efforts.

Like other health care institutions, I'm sure your practice has changed dramatically since the COVID pandemic hit in early 2020. UAMS Health is no exception, and I hope these changes make it easier for you to refer patients and partner with us in their care.

The expertise and resources of the UAMS Institute for Digital Health & Innovation allow us to support you and your patients in innovative ways. For example, our Stroke Program delivers live, telemedicine-based neurology consultations in emergency departments by connecting potential stroke patients with UAMS specialists. Our UAMS HealthNow site began during the pandemic and continues to offer virtual urgent care for minor injuries, common illnesses, stomach and skin problems and HIV prevention. We also have a virtual hernia clinic, and our high-risk pregnancy program offers telemedicine consultations. We also provide resources and services to support care for adult sickle cell patients, our TeleSANE program connects clinicians with UAMS consultants specially trained in caring for patients who have experienced a sexual assault, and our Brain Injury Program offers support for Arkansans living with brain injury. To learn more about these and other telemedicine offerings, visit idhi.uams.edu.

Rest assured we still have all the programs you've relied on and trusted UAMS Health to provide for many years. The UAMS Physician's Call Center continues to provide consultation, transport and triage services for physicians across Arkansas. Just call us at 1-866-UAMS-DOC (1-866-826-7362) or 501-686-6080. For obstetric consultations, call 1-866-273-3835. For outpatient clinic appointments, call 501-686-8000.

Together, in person or virtually, we will create a better state of health.

Sincerely,

Michelle W. Krause, M.D., MPH
Senior Vice Chancellor,
UAMS Health
CEO, UAMS Medical Center
KrauseMichelleW@uams.edu

PHYSICIAN RELATIONS & STRATEGIC DEVELOPMENT

UAMS Physician Relations & Strategic Development serves as liaison between UAMS physicians and community providers. Our goal is to improve the UAMS patient referral process for you and to provide you and your staff with the most up-to-date UAMS resources. Please visit our website for referring physicians: **UAMS.Health/MD**



Michelle W. Krause, M.D., MPH

Senior Vice Chancellor,
UAMS Health
CEO, UAMS Medical Center
(501) 686-8206
KrauseMichelleW@uams.edu



Melanie Meyer, M.Ed.

Director, Physician Relations
& Strategic Development
(501) 686-8206
melanie@uams.edu



Carla Alexander, M.Ed.

Manager, Physician Relations
& Strategic Development
(501) 686-7934
carla@uams.edu



Byron Jarrett

Liaison, Physician Relations
& Strategic Development
(501) 603-1440
byron@uams.edu



Wendy Sheridan

Liaison, Physician Relations
& Strategic Development
(501) 686-6051
wendy@uams.edu

TABLE OF CONTENTS

| | |
|---|-------|
| Physician Resources | 2 |
| UAMS Referring Physician Website | 2 |
| EpicCare | 2 |
| UAMS Physician Call Center | 2 |
| MedNews Plus | 3 |
| Lunch & Learn Webinars | 3 |
| Appointment Quick Reference | |
| Central Arkansas | 4 |
| Northwest Arkansas | 8 |
| Regional Campuses | 9 |
| Interpreter Services | 9 |
| UAMS Key Telephone Numbers | 10 |
| Physician Recruitment | 11 |
| Transplant Satellite Clinics | 12 |
| Preceptor Opportunities | 12 |
| Proton Center | 13 |
| UAMS/Baptist Health Cancer Center | 13 |
| AR Research | 14 |
| MATRIARC | 14 |
| UAMS AR ConnectNow..... | 15 |
| SHARE..... | 15 |
| UAMS Library Databases & Resources..... | 16-17 |
| UAMS Main Campus Map..... | 18 |

Website for Referring Physicians

UAMS.Health/MD

Site includes information on:

- Appointments and Transfers
- CME - Lunch & Learns
- MedNews Plus
- *The Consult*
- Referral Resources
- EpicCare Link
- Referring Physician Quick Reference
- Managed Care
- Maps
- Online Appointment Request
- Physician Call Center
- Physician Directory
- Physician Recruitment and Provider Placement
- Physician Relations Staff
- UAMS Library
- Alumni Relations

EpicCare Link

UAMS.Health/EpicCare

Training Tutorial & New User LearnOnDemand CE Lecture

It is free of charge, easy to sign up and convenient to use.

EpicCare Link is a secure, web-based portal for referring physicians to track patient progress and treatment while at UAMS and provides secure messaging for you to offer electronic consults.

Appointment Requests Now Available!

How to register:

- 1 Visit **UAMS.Health/EpicCare**
- 2 Complete the EpicCare Link access request form
- 3 UAMS IT will e-mail your user name and password



Physician Call Center

Transfers and Consults **501-686-6080**

*Direct Number to the **Physician Call Center***

The **Physician Call Center** is staffed by experienced telephone triage RNs - **24/7, 365 days of the year.**

The Call Center nurse will ensure timely, appropriate consults for your patients, assist you with transfer requests and keep you updated when patient transfers are delayed.

You may still call 866-826-7362 or 501-686-8000 to access the Call Center, the Appointment Center, hospital operators and other areas.

CME and Outreach

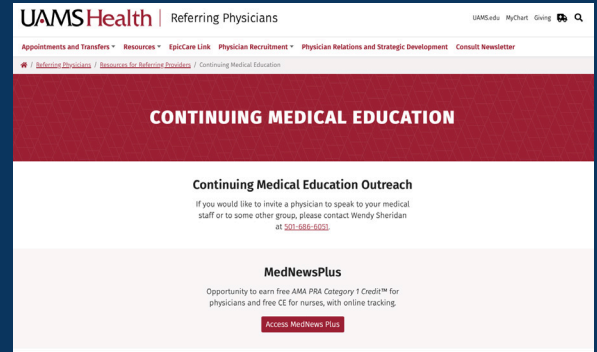
MedNews Plus

Email news subscription providing medical professionals with:
Breaking medical news and conference coverage:

- according to specialty
- pulled from over 300 sources, including top medical journals and otop medical meetings that take place around the world each year.
- Over 800 hours of AMA PRA Category 1™ CME credit for physicians each year (nearly 1,000 hours of CE for nurses annually),
- Important UAMS news and updates.

MedNews Plus is available for all medical professionals, including practice managers, who can sign up as a “health administrator” and follow the “practice management” topic. Subscribers will receive a morning email, branded as UAMS, only when there is breaking medical news in the specialty(s) to which they subscribe.

To register, visit [UAMS.MedNewsPlus.com](https://uams.mednewsplus.com).

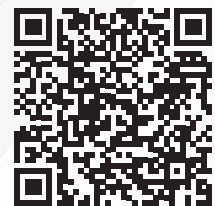


Lunch & Learn Webinars

UAMS offers monthly Lunch & Learn Webinars at the Pine Bluff and Texarkana Regional Programs and will be expanding to other UAMS Regional Programs in 2025.

Past lectures and upcoming lecture information available at:

<https://tinyurl.com/UAMSLunchandLearn>



If you are interested in having a UAMS physician speak to your medical staff or group, please contact **Wendy Sheridan** at **501-686-6051** or **wendy@uams.edu**.

For additional UAMS CME opportunities visit:

<https://tinyurl.com/UAMSce>

APPOINTMENT QUICK REFERENCE

CENTRAL ARKANSAS

ALLERGY & IMMUNOLOGY

501-214-2400

New Patients: 866-826-7362 or 501-526-1020

Referrals & Records Fax: 501-686-8232

Return Patients: 501-614-2948

AUDIOLOGY

501-686-5878, Option 1

Referrals & Records Fax: 501-603-1539

- Hearing tests, Balance studies, Hearing aids

CARDIOLOGY/ELECTROPHYSIOLOGY

New Patient: 866-826-7362 or 501-526-1020

Referrals & Records Fax: 501-603-1538

Clinic: 501-686-5311, Option 3

Advanced Heart Failure

Email AHF@UAMS.EDU

Fax #501-686-8321

Phone #501-526-5589

CARDIOTHORACIC SURGERY

501-296-1200

Referrals & Records Fax: 501-603-1538

Return Patients: 501-686-8211

CARDIOTHORACIC SURGERY - ACH

501-364-5858

ACUTE CARE HEART CENTER

501-398-3698

DERMATOLOGY

New Patients: 866-826-7362 or 501-526-1020

Referrals & Records Fax: 501-603-1538

Return Patients: 501-686-5960

DIAGNOSTIC CLINIC

866-826-7362 or 501-526-1010

Referrals & Records Fax: 501- 603-1537

EMERGENCY MEDICINE

Emergency Room: 501-526-2085

ENDOCRINOLOGY

866-826-7362 or 501-526-1020

Referrals & Records Fax: 501- 296-1224

Return Patients: 501-296-1220
or 501-214-2400

ENDOCRINE SURGERY

501-296-1220 option 2

Referrals & Records Fax: 501-686-7280

THYROID ONCOLOGY

New Patients: 501-686-8224

Return Patients: 501-686-8224, option 1

MEDICAL WEIGHT MANAGEMENT CLINIC

1-866-UAMS DOC (866-826-7362)

or 501-686-8000

FAMILY & PREVENTIVE MEDICINE

FAMILY MEDICAL CENTER

501-686-6560

NEIGHBORHOOD CLINICS

- CAPITOL MALL

1401 W. Capitol Ave., Little Rock, AR 72201

501-320-7000

- MAUMELLE

FM, CARDIOLOGY

102 Town Centre Dr. Maumelle, AR 72113

501-614-2470

- RAHLING ROAD

FM, IM, GENETICS

1811 Rahling Road Ste 120, Little Rock,
AR 72223

501-214-2360

GASTROENTEROLOGY

501-603-1900

Referrals & Records Fax: 501-603-1539

ADVANCED ENDOSCOPY

501-526-0865

Referrals & Records Fax: 501-603-1533

GENERAL INTERNAL MEDICINE

866-826-7362 or 501-526-1010

Referrals & Records Fax: 501- 603-1537

GENETICS

501-526-4020

Referrals & Records Fax: 501- 603-1550

GERIATRICS

501-686-6219

Referrals & Records Fax: 501-603-1537

HEMATOLOGY/ONCOLOGY

New or Returning Patients: 501-296-1200
Referrals & Records Fax: 501-603-1550

UAMS BAPTIST HEALTH CANCER CENTER MEDICAL ONCOLOGY CLINIC

3401 Springhill Dr., Suite 340
North Little Rock, AR 72117
501-214-2170
Referrals & Records Fax: 501-214-2171

INFECTIOUS DISEASES

501-603-1616
Clinic Fax: 501-603-1480
Referrals & Records Fax: 501-603-1538

MEDICAL WEIGHT MANAGEMENT CLINIC

Phone 501-526-7877
Referrals & Records Fax: 501-526-7354
Return Patients: 501-526-7877

MOVEMENT DISORDER CLINIC

Clinic: 501-526-5364
Referrals & Records Fax: 501-603-1539

MULTIPLE MYELOMA

New Patients: 501-686-8230
Return Patients: 501-686-8230
Referrals & Records Fax: 501-686-8546

NEPHROLOGY-KIDNEY CLINIC

New Patients: 866-826-7362 or 501-526-1020
Referrals & Records Fax: 501-661-7936
Return Patients: 501-661-7910

NEUROLOGY

EPILEPSY & NEUROLOGY CLINIC
501-686-5838
Referrals & Records Fax: 501-603-1539

NEUROSURGERY

NEUROSURGERY & SPINE CLINIC
501-686-5270
Referrals & Records Fax: 501-686-7928

OBSTETRICS/GYNECOLOGY

ANGELS CALL CENTER
501-526-7425 or 866-273-3835
Referrals & Records Fax ANGELS
501-526-7287

UAMS HEALTH WOMEN'S CENTER (OB/GYN, VULVAR DISORDERS)

866-826-7362 or 501-526-1050
Referrals & Records Fax:
Womens: 501-603-1543

GYNECOLOGIC ONCOLOGY

New Patients: 501-686-5669 option 3
Return Patients: 501-686-5669 option 2

OPHTHALMOLOGY

501-686-5822
Referrals & Records Fax: 501-526-6780

ORTHOPAEDICS & SPORTS MEDICINE

Little Rock (Autumn Road, Colonel Glen & Shackelford) & North Little Rock
866-826-7362 or 501-296-1500
Referrals & Records Fax: 501-603-1541

ORTHOPAEDIC ONCOLOGY

501-296-1200

ORTHO SPINE

501-686-5270
Referrals & Records Fax: 501-686-7928

ACH patients: 501-364-2946

UAMS BAPTIST HEALTH ORTHOPAEDIC CLINIC IN CONWAY

501-358-6792
Referrals & Records Fax: 501-358-6841

OTOLARYNGOLOGY

ENT CLINIC

New Patients:
866-826-7362 or 501-526-1030
Referrals & Records Fax: 501 603-1539
Return Patients: 501-686-5878

HEAD & NECK CLINIC

New Patients: 501-296-1200
Return Patients: 501-686-8224

CONWAY ENT CLINIC

501-932-7600
Referral & Records fax: 501-932-7603

APPOINTMENT QUICK REFERENCE

Outpatient Therapy

UAMS ORTHO PHYSICAL & HAND THERAPY

New Patients: 501-296-1500

Autumn Road 501-320-7777

Colonel Glenn 501-406-9234

Midtown Cottage Drive 501-686-6102

Center on Aging 501-526-5770

Spine Center 501-661-7955

Women's Center 501-296-1500

North Little Rock 501-526-7555

SPEECH PATHOLOGY 501-686-8378

Referrals & Records Fax: 501-603-1541

PAIN CLINIC

INTERVENTIONAL 501-686-8818

Referrals & Records Fax: 501-526-4216

PALLIATIVE CARE CLINIC

New and Return Patients: 501-686-8738

PATHOLOGY

501-526-7394

FNA Appointments: 501-686-8224

PEDIATRICS

501-364-5901

PHYSICAL MEDICINE & REHABILITATION

501-221-1311

Referrals & Records Fax: 501-603-1541

PROTON CENTER OF ARKANSAS

501-664-4568

PSYCHIATRIC RESEARCH INSTITUTE

501-526-8100

CENTER FOR ADDICTION SERVICES AND TREATMENT

501-526-8400

CHILD STUDY CENTER

501-364-5150 (ACH campus)

Referrals & Records Fax:

Child Study: 501-603-1860

COUPLES CENTER

501-526-8200

CRISIS STABILIZATION UNIT

501-340-6646

Referrals & Records Fax: 501-975-4129

INPATIENT PSYCHIATRY

501-686-6080 (UAMS Call Center)

INTERVENTIONAL PSYCHIATRY/ECT

501-526-8603

INTERVENTIONAL PSYCHIATRY/TMS

501-526-8267

NEUROPSYCHOLOGY

501-526-8364

STRIVE

501-771-8261

WALKER FAMILY CLINIC

501-526-8200

WOMEN'S MENTAL HEALTH CLINIC

501-526-8201

PULMONARY

866-826-7362 or 501-526-1020

Referrals & Records Fax: 501-603-1480

Clinic: 501-603-1400

CYSTIC FIBROSIS

501-614-2948

RADIATION ONCOLOGY (ROC)

New Patients: 501-664-4568

Referrals & Records Fax: 501-614-9880

Return Patients: 501-664-4568

UAMS BAPTIST HEALTH - RADIATION THERAPY CENTER

3401 Springhill Drive, Suite 13

North Little Rock, AR 72117

501-214-2460

Referrals & Records Fax: 501-214-2461

RADIOLOGY

INPATIENT, BONE SCAN, MUGA

501-686-6661

ONLINE APPOINTMENT SCHEDULING: UAMS.Health/MD

OUTPATIENT APPOINTMENTS 501-686-6190

CT 501-686-5777

INTERVENTIONAL RADIOLOGY 501-686-6124

MAMMOGRAPHY 501-526-6100

MRI 501-686-6033

NUCLEAR MEDICINE 501-686-6661

NEURO-INTERVENTIONAL RADIOLOGY
501-686-5745

PET 501-526-6526 or 501-686-8424

ULTRASOUND 501-686-5763

RHEUMATOLOGY

501-603-1919

Referrals & Records Fax: 501-526-7506

Clinic: 501-603-1919

SURGERY

Pre-Op & Evaluation: 501-603-1211

Referrals & Records Fax: 501-686-7618

BREAST ONCOLOGY

501-296-1200

Referrals & Records Fax: 501-603-1550

Return Patients: 501-686-8522

COLORECTAL SURGERY 501-686-8211

Referrals & Records Fax: 501-603-1550

ENDOCRINE SURGERY

501-296-1220 option 2

Referrals & Records Fax: 501-686-7280

GENERAL SURGERY 501-526-1030

Referrals & Records Fax: 501-603-1539

GENERAL SURGERY - ACH 501-364-1446

HEPATO-PANCREATO-BILIARY SURGERY

New Patients: 501-296-1200

Referrals & Records Fax: 501-603-1550

New patient E-mail: UAMShpb@uams.edu

Return Patients: 501-686-8211

LUNG CANCER

New Patients: 501-296-1200

Referrals & Records Fax: 501-603-1550

Return Patients: 501-686-8211

PLASTIC

New Patients: 501-686-8111

Referrals & Records Fax: 501-603-1539

Return Patients: 501-526-1030

PLASTIC - ACH 501-364-1195

SURGICAL ONCOLOGY - GENERAL

501-296-1200

Referrals & Records Fax: 501-603-1550

Return Patients: 501-686-8211

VASCULAR SURGERY 501-686-6176

Referrals & Records Fax: 501-686-5328

TRANSPLANT

1-800-552-8026

KIDNEY & PANCREAS 501-686-6640

Referrals & Records Fax: 501-686-6375

LIVER 501-686-8962

Referrals & Records Fax: 501-686-5215

SATELLITE CLINICS

El Dorado, Fayetteville, Fort Smith, Helena,
Jonesboro, Texarkana & Pine Bluff

Pine Bluff scheduling: 870-541-6000

Referral & Records fax: 870-541-7618

UROLOGY

10915 Rodney Parham Road, Suite F

Little Rock, AR 72212

New Patients: 501-526-1030

Referrals & Records Fax: 501-603-1539

Return Patients: 501-686-6324

GENITOURINARY ONCOLOGY

New Patients: 501-296-1200

Return Patients: 501-526-1045

UROLOGIC PROSTHETICS

New Patients: 866-826-7362 or 501-526-1030

Return Patients: 501-686-6324

APPOINTMENT QUICK REFERENCE

NORTHWEST ARKANSAS

ADULT GENETICS

1125 N. College Ave.
Fayetteville, AR 72703
501-526-4020

Referrals & Records Fax: 501-526-4029

FAMILY MEDICAL CENTER

Fayetteville

1125 N. College Ave.
Fayetteville, AR 72703
479-521-8260

Referrals & Records Fax: 479-443-3903

Springdale

601 W. Maple Ave., Suite 102
Springdale, AR 72764
479-750-6585

Referrals & Records Fax: 479-750-6594

INTERNAL MEDICINE CLINIC

1125 N. College Avenue
Fayetteville, AR 72703
479-713-8701

Referrals & Records Fax: 479-713-8719

NORTH STREET CLINIC

Free & Charitable Clinic for the underserved community

1125 N. College Ave.
Fayetteville, AR 72703
479-713-8701

Referrals & Records Fax: 479-713-8719

BUTTERFIELD TRAIL VILLAGE CLINIC

1923 Joyce Blvd.
Fayetteville, AR 72703
479-713-5230

Referrals & Records Fax: 479-332-4405

PSYCHIATRIC RESEARCH INSTITUTE

3425 N. Futrall
Stephens Bldg
First Floor, Suite 103
Fayetteville, AR 72703
479-713-8350

Referrals & Records Fax: 479-332-0701

ORTHOPAEDICS & SPORTS MEDICINE CLINIC

FAYETTEVILLE

201 W. Van Asche Loop
Fayetteville, AR 72703
479-966-4491

Referrals & Records Fax: 479-966-4311

LOWELL

507 W Monroe Ave., Lowell, AR 72745
479-334-7030

Referrals & Records Fax: 479-966-4311

OUTPATIENT THERAPY

Northwest Campus - Fayetteville

1125 N. College Ave.
Fayetteville, AR 72703
479-713-8630

Referrals & Records Fax: 479-713-8639

Schmieding Center - Springdale

2422 N Thompson St.
Springdale, AR 72764
479-713-8630

Referrals & Records Fax: 479-713-8639

Train Recover Move (TRM) - Fayetteville

201 W Van Asche Drive
Fayetteville, AR, 72703
479-966-4055

Train Recover Move (TRM) - Rogers

2530 Pinnacle Hills Parkway, Suite 200
Rogers, AR, 72758
479-966-4055

Hand Therapy Clinic - Lowell

507 W. Monroe Ave.

Lowell, AR 72745
479-334-7030

SCHMIEDING DEVELOPMENT CENTER - LOWELL

2575 S. Gene George Blvd., Suite 100
Springdale, AR 72762
479-750-0125

Referrals & Records Fax: 479-750-0323

ONLINE APPOINTMENT SCHEDULING: UAMS.Health/MD

SCHMIEDING KIDS FIRST

2575 S. Gene George Blvd.
Springdale, AR 72762
479-750-0130

Referrals & Records Fax: 479-750-0937

REGIONAL CAMPUSES

UAMS NORTH CENTRAL BATESVILLE

Family Medical Center
1993 Harrison St.
Batesville, AR 72501
Phone: 870-793-2540

UAMS NORTHWEST FAYETTEVILLE

Family Medical Center/Internal Medicine
1125 N. College Ave.
Fayetteville, AR 72703
479-521-8260 (Family Medicine)
479-713-8701 (Internal Medicine)

SPRINGDALE

601 W. Maple Ave., Suite 102
Springdale, AR 72764
479-750-6585

UAMS WEST FORT SMITH

Family Medical Center
1301 South E St.
Fort Smith, AR 72901
479-785-2431

UAMS EAST HELENA-WEST HELENA

Family Medical Center
1393 Highway 242 South
Helena-West Helena, AR 72342
870-572-6507

UAMS NORTHEAST JONESBORO

Family Medical Center
311 East Matthews Ave.,
Jonesboro, AR 72401
870-972-0063

UAMS SOUTH EL DORADO

Family Medical Center
620 West Grove Street, Suite 202
El Dorado, AR 71730
870-639-9939

MAGNOLIA

Family Medical Center
1617 North Washington St.
Magnolia, AR 71753
870-234-7676

UAMS SOUTH CENTRAL PINE BLUFF

Family Medical Center
1601 West 40th Ave.
Pine Bluff, AR 71603
870-541-6000

UAMS SOUTHWEST TEXARKANA

Family Medical Center
3417 U of A Way
Texarkana, AR 71854
870-779-6000

UAMS Institute for Digital Health & Innovation INTERPRETER PROGRAM

***Now serving other health care facilities
and clinics throughout Arkansas!***

The Institute for Digital Health & Innovation (IDHI) Interpreter Program is the central hub for all interpreting services at UAMS. This program offers:

- Over-the-phone and video interpreting
- Document translation
- MyChart translation
- And more!

For more information, call 501-526-0399, or email us at idhiinterpreters@uams.edu.

KEY TELEPHONE NUMBERS

TRANSFER NUMBERS

*UAMS Physician Call Center
501-686-6080 or 866-UAMS-DOC

Appointment Center.....501-526-1000

All numbers are area code 501 unless listed otherwise.

Hospital

Department Phone Numbers

Administration603-1452
Admissions 686-6236
Admission Assessment Area 526-3661
Arkansas Poison Center 1-800-3POISON
Bed Control (Resource Mgmt.) 686-5641
Breast Center 526-7300
 Clinical Decision Unit 686-7557
Care Management 686-5870
Cath Lab526-3280
Clinical Command Center.....603-1000
Clinical Lab (for results) 686-6230
Dialysis.....526-3750
Emergency Department526-2085
 Clinical Decision Unit..... 686-7557
Hand Therapy Rehabilitation 686-6102
Hospital Operator686-7000
Interventional Radiology686-6124
Kidney Transplant686-6640
Liver Transplant..... 686-8962
Medical Records 603-1520
Occupational Therapy Inpatient ... 686-6120
One Day Surgery320-7168
OR Front Desk 526-3200
PACU (recovery room) 526-3242
Patient Relations/Advocate296-1039
Patient Safety.....296-1039
Pharmacy (inpatient) 686-6221
Pharmacy (outpatient) 686-5530
Physical Therapy Inpatient 686-6120
Physical & Occupational Therapy Outpatient
 At Spine Institute 661-7955
 At Aging Institute 526-5770
Physician Relations.....603-1440
Pre-Op 526-3240
Psychiatric Research Institute 526-8200
Quality Management 296-1325

Radiology.....686-5750
Respiratory Manager's pager405-8059
 Office 686-7200
Risk Management.....296-1039
Security (UAMS Police)..... 686-7777
Speech Therapy (Outpatient) 686-8378
Speech Therapy (Inpatient) 686-6120
Surgery (Info).....686-7653
Scheduling (Main OR) 614-2900 x1101/x1102
The Orthopedic & Spine Hospital (TOSH)
 686-8674

Nursing Units

Emergency Room526-2085
A7 Antepartum686-7750
E4 Medical/Neuro ICU..... 526-0400
E5 LDR/Triage526-0500
E6 Perinatal Unit..... 526-0600
E7 Medical Oncology Overflow...526-0700
F7 Medical Oncology Transplant .526-1700
F4 Progressive Care..... 526-1400
F5 Neonatal ICU..... 526-1500
F6 Cardiac Progressive Clinic..... 526-1600
F8 Cardiac Progressive Care 526-1800
F9 Surgical Specialties..... 526-1900
H4 TSICU/CVICU.....526-3400
H5 Neonatal ICU 526-1500
H6 Short Stay 526-3600
H7 Medical Oncology 526-3700
H8 Neurology / Neurosurgery 526-3800
H9 Nephrology/Surgical Svs..... 526-3900
TOSH..... 686-8031

Other/Campus

Chancellor's Office 686-5680
Chief Clinical Officer 686-8113
Creative Services.....686-5570
Dean's Office 686-5350
FGP Claims Management..... 614-2082
IT Help Desk.....686-8555
Public Safety..... 686-7777



Physician Recruitment and Provider Placement

The UAMS Physician Recruitment and Provider Placement Program has a team of Placement Specialists dedicated to serving the recruitment needs of UAMS, UAMS Regional Programs and our partner communities by:

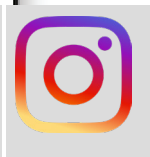
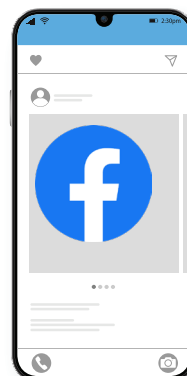
- Assisting with the development of detailed profiles of available opportunities
- Promoting practice opportunities to UAMS residents and practicing physicians
- Utilizing national and local internet job boards
- Attending regional and virtual career fairs
- Referring candidates to partnering communities
- Providing professional development training to community hospitals and providers through LOD

Contact **Carla Alexander** at **501-686-7934** or **carla@uams.edu** for details on the MedJobArkansas Contract.

Candidate Opportunities & Resources

The Physician Recruitment and Provider Placement Program is available to assist candidates with professional development training and provide practice opportunities available throughout Arkansas.

Find detailed opportunities and register on the Job Board at **medjobarkansas.com**. CV tips, templates, and samples are available on the site.



Follow us on Social Media

UAMS HEALTH TRANSPLANT SATELLITE CLINICS

UAMS is the home of Arkansas' only adult kidney, liver and pancreas transplant center.

With transplants beginning in 1964 with the state's first kidney transplant. UAMS also performed the state's first liver transplant in 2005. The UAMS Organ Transplant team has performed more than 3,100 kidney transplants and over 650 liver transplants.

UAMS' kidney and liver transplant programs are among the highest-ranked programs in the nation in categories that have the largest impact on patients' survival, both ranking in the top 5 centers in the nation.

Services provided:

- Liver, Kidney and Pancreas care
- Dialysis Access Evaluation
- Liver, Pancreatic & Cancer Evaluation and Care
- Management of Disorders of the bile ducts
- Liver Failure/Liver Dysfunction care

Transplant patients are seen at the following UAMS Health Family Medical Center locations:

- **El Dorado**
- **Fayetteville**
- **Fort Smith**
- **Helena**
- **Jonesboro**
- **Texarkana**
- **Pine Bluff**

B-FIT Program

Bariatric-Focused Intervention for Transplant
The UAMS Health Transplant team is providing multidisciplinary and comprehensive care to overcome obesity as a barrier to transplant.

- Now accepting eligible patients with BMI 40-50.
- Must have a transplant referral and pass initial financial and medical screening for transplant.

Bariatric surgery makes transplants possible!

For more information or to refer a patient, visit
UAMS.Health/LiverKidney

Preceptor Opportunities

We need you!

- Are you board certified?
- Do you enjoy teaching medical students?
- Do you want to train your next partner?

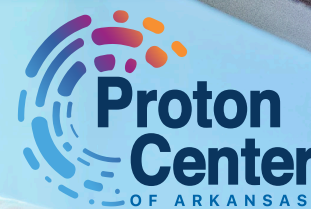
PARTICIPATING PHYSICIANS RECEIVE:

- 20 hours AAFP prescribed credit
- UAMS adjunct faculty appointment
- Free online CME through UAMS LearnOnDemand
- Digital access to the UAMS Library, UpToDate, PubMed, Medline and more
- 10 hours Part 4 MOC credit

For more information or to sign up: **Jessica Bursk**
JLBURSK@UAMS.EDU | 501-686-5260



Precision and Protection in Cancer Treatment



ARKANSAS CHILDREN'S • BAPTIST HEALTH
UAMS HEALTH • PROTON INTERNATIONAL

Arkansas' Only Proton Center

Proton therapy is the ideal and most precise radiation treatment for many adult and pediatric cancers. Backed by decades of research, proton therapy protects the body's healthy organs and tissues from the harmful side effects of unnecessary radiation exposure. If you have any questions or to refer a patient, call **501-664-4568**.

Scan the QR code to access clinical studies from proton experts.



UAMS.Health/ReferProton

UAMS Winthrop P. Rockefeller Cancer Institute

The **UAMS Winthrop P. Rockefeller Cancer Institute** is Arkansas' most comprehensive cancer treatment and research facility. The institute's staff of physicians, nurses, researchers, and other health care professionals are dedicated to improving the health of all cancer patients, both from Arkansas and beyond.

As the only academic medical center in the state, our researchers and scientists conduct research that translates into new procedures and treatments that are being used in hospitals around the world.

Locations:

- UAMS Winthrop P. Rockefeller Cancer Institute - Little Rock
- UAMS Baptist Health Cancer Clinic - Little Rock
- UAMS Health Medical Oncology and Infusion Clinic - North Little Rock
- UAMS Baptist Health Radiation Therapy Center - North Little Rock

For more information, visit UAMS.Health/CancerCare
For referrals, call 501-686-6080.



Help Connect Arkansans with UAMS Health Research ARresearch.org

Arkansans have a simple way to participate in health-related studies thanks to **ARresearch.org**, an innovative program of the UAMS Translational Research Institute.

This online registry, also available in Spanish, now includes more than 11,000 Arkansans from all 75 counties.

When filling out the form, registrants choose from 31 health interest areas, such as weight management, cancer, heart disease and a healthy volunteer option. UAMS researchers may invite registrants to participate if their study aligns with the registrants' selected health interest areas.

Many studies, such as online surveys, do not require travel, and some provide convenience with procedures conducted at UAMS Regional Campuses. Compensation is also provided in

many studies.

The ARresearch registry form takes less than five minutes to complete and does not obligate any registrant to participate in a study. Volunteers may also leave a study at any time.

As the state's only academic medical center, UAMS conducts translational research that benefits communities in Arkansas and beyond. Study volunteers are crucial for helping researchers meet their enrollment goals and improving the quality of their findings.

Please help spread the word to your patients and others about this unique opportunity.

For more information, visit ARresearch.org or TRI.uams.edu. Questions? Contact Pam Christie, PChristie@uams.edu.



MATRIARC MEDICATION ASSISTED TREATMENT RECOVERY INITIATIVE FOR ARKANSAS RURAL COMMUNITIES

MATRIARC (Medication Assisted Treatment Recovery Initiative for Arkansas Rural Communities)

is a partnership with the UAMS Psychiatric Research Institute and the Arkansas Department of Human Services designed to expand evidence-based treatment for opioid use disorders.

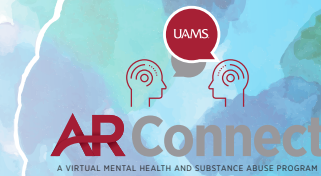
An addiction psychiatrist is available free of charge via telephone to offer consultations to primary care physicians, general psychiatrists, advanced practice nurses, physician assistants and mental health professionals providing medication-assisted treatment to patients dealing with opioid use disorder.

The service is available Monday through Friday, from 8:30 a.m. to 4:30 p.m., excluding state holidays.
Call 501-526-8459 or 833-872-7404 to speak to a trained addiction specialist.

AR ConnectNow A VIRTUAL MENTAL HEALTH PROGRAM

UAMS Health AR ConnectNow is there for you, whenever you need it.

The University of Arkansas for Medical Sciences (UAMS) AR ConnectNow call center is open 24 hours a day, seven days a week, answering the needs of Arkansans dealing with any number of mental health issues. The caller is evaluated by a nurse triage team and, if needed, contacted by another medical professional within 24 hours. The contact will be by live video. The virtual clinic operates Monday through Friday, 8 a.m. to 5 p.m.



For more information, email ARconnectnow@uams.edu or visit uamshealth.com/ar-connectnow

Call (501) 526-3563 or toll-free at (800) 482-9921 to speak to a medical professional.



SHARE

ShareArkansas.com

UAMS is pleased to announce its continued partnership with the Arkansas Department of Health, Office of Health Information Technology in facilitating the implementation of SHARE (the Arkansas State Health Alliance for Records Exchange), the only statewide health information exchange (HIE).

SHARE securely gathers your medical information from different health care providers and creates a more complete picture of a patient's health. Our goal is to improve the quality of health for Arkansas by enabling a more effective use of secure electronic health information exchange while improving the delivery of health care services. Visit SHAREarkansas.com to learn more!

Anne Santifer, Executive Director
anne.santifer@arkansas.gov
501.410.1999

Justin Villines, HIT Policy Director
justin.villines@arkansas.gov

For more information about SHARE and how to sign up, go to: SHAREarkansas.com.



SHARE
State Health Alliance [®] Records Exchange

UAMS Library Databases & Resources

Do you need to search the current clinical literature or find information on clinical trials? The following databases provided by the U.S. National Library of Medicine (NLM) or the National Cancer Institute (NCI) are available free online:

MEDLINE via PubMed.gov (NLM)

- Includes over 37 million citations in biomedical & life sciences journal literature.
- Indexed records go back to 1946.
- Some older records may go back to late 1700s.
- Some free full text is available.

PDQ (Physicians Data Query) via Cancer.gov (NCI)

- Includes comprehensive evidence-based information about cancer treatment, screening, prevention, genetics, and supportive care plus over 8,000 open NCI clinical trials.
- Provides a genetic services directory.
- Most summaries available in Spanish. A to Z list of Summaries <https://www.cancer.gov/publications/pdq/information-summaries/adult-treatment>

ClinicalTrials.gov (NLM) ClinicalTrials.gov

- Provides current information for locating federally and privately supported clinical trials for diseases and conditions in humans.
- Includes trial's purpose, who may participate, locations (U.S. and International) and contacts.
- Filters for finding studies with results are available.

PubChem (NLM) <https://pubchem.ncbi.nlm.nih.gov/>

- An open chemistry database with information on chemical structures, identifiers, chemical and physical properties, biological activities, patents, health, safety, toxicity data, & others.
- PubChem accepts data submissions about chemical structures, annotations, and associated bioassay test results.

Drugs, Herbs & Supplements (NLM) medlineplus.gov/druginformation.html

- Provides effectiveness, dosage, and drug interactions for dietary supplements and herbal remedies

DailyMed (NLM)

- FDA labels for 144,113 marketed drugs and biological products dailymed.nlm.nih.gov

ADDITIONAL DATABASES

- For a list of free biomedical resources for Arkansas health professionals, see: <http://libguides.uams.edu/services-to-state/ark-healthcare-professionals>

UAMS Library's COVID-19 Resources page <https://libguides.uams.edu/COVID-19> (Est. 1-2020) provides information for health professionals, librarians, educators, researchers, the public, and more.

FULL TEXT ARTICLES

Do you need free full text articles or the ability to order documents from a medical library? The following options are available:

Free Full Text

PubMed pubmed.gov

- Some free full text articles are available via PubMed Central (PMC) buttons.
- Use the “free full text” filter on the left navigation bar.

Directory of Open Access Journals www.doaj.org

- Covers free, full text, quality-controlled scientific and scholarly journals from 136 countries.
- Currently there are 21,159 journals within 20 subjects.
- The Medicine section has 16 subsections including OB/GYN, internal medicine, pediatrics, pharmacy, surgery, and others.

Full Text Access

PubMed www.pubmed.gov

- Includes many links to publishers’ sites [usually require paid subscription].

Interlibrary Loans (ILLs) <https://libguides.uams.edu/ill-edd/home>

- Must have an account with the UAMS Library (Fee-based).
- Includes ILLs from other medical libraries outside of Arkansas.
- Contact the ILL Office at 501-686-6744 or LibraryInterLibraryLoan@uams.edu.

TRAINING

Would you like to learn how to use PubMed & other clinical and patient education resources to the best of your ability?

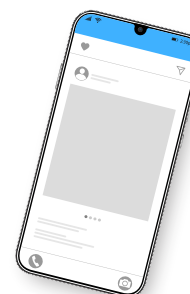
- The UAMS Library offers free training for individuals or groups on these resources.
- Contact the Education & Research Services Department at: 501-686-6734.
- Remote training sessions are available via Zoom. You can also request a class via: <https://uams.libwizard.com/f/class-instruction-request>

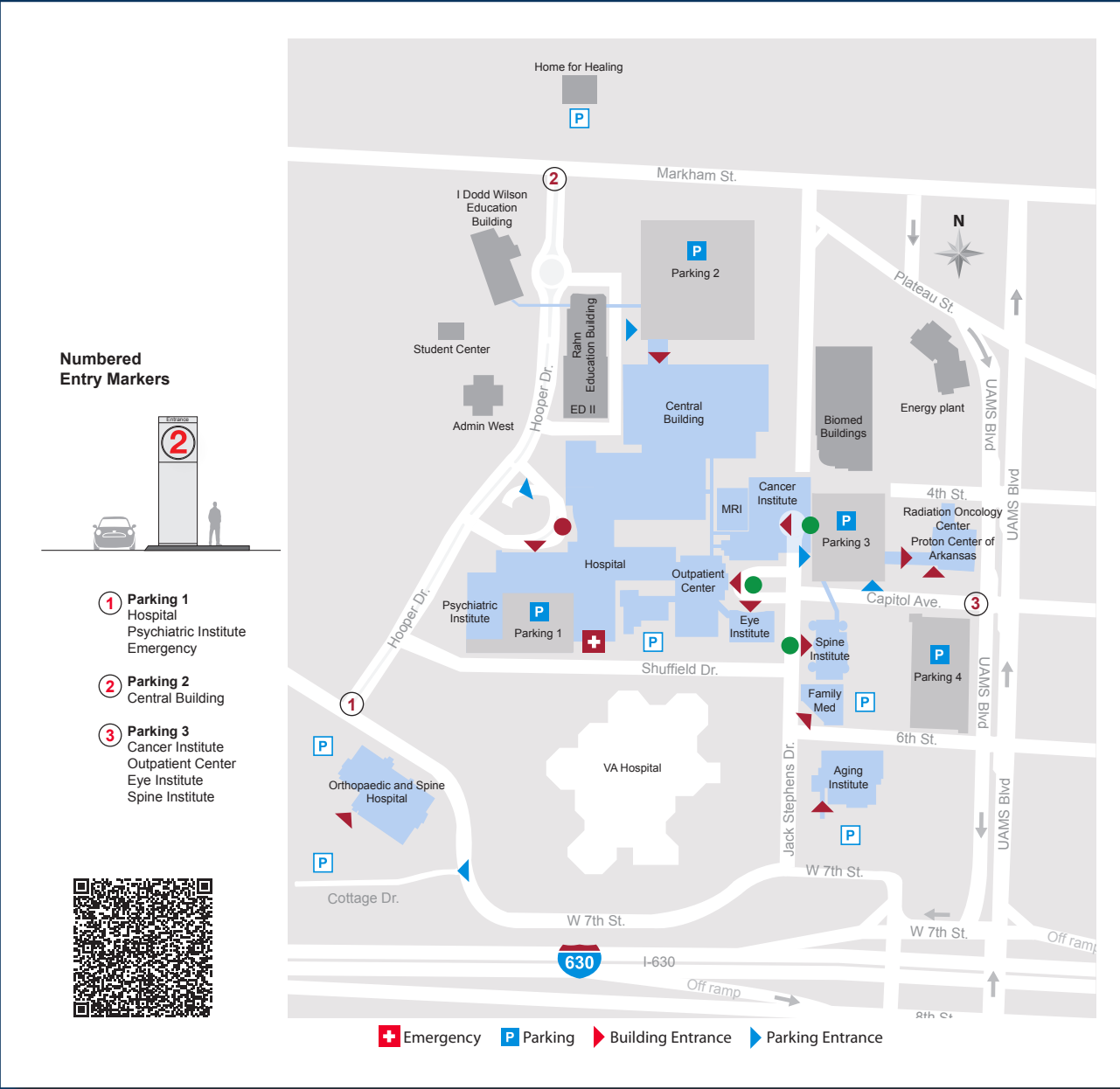
TIME A PROBLEM?

If you don't have time to do searches yourself or cannot find what you're looking for, contact the UAMS Librarians who can provide FREE expert literature searches. Contact us at 501-686-6734.

- To request a Literature Search visit the online form: <https://uams.libwizard.com/f/literature-search-request>
- Results include search strategies, citations and abstracts.
- We also provide free consultations to help with auto alerts or reference questions.

Follow us on Facebook, Twitter, or Instagram
[@UAMSLibrary](https://www.instagram.com/UAMSLibrary) for news about the Library and biomedical
information resources.





For more UAMS locations and maps,
 please visit UAMS.Health/Maps

UAMS Health