



2021

REFERRING PHYSICIAN QUICK REFERENCE



UAMS®



Message from Dr. Seupaul

Physician Relations & Strategic Development's goal is to improve the UAMS referral process and to provide pertinent resources for you and your clinical staff, many which can be found in this Referring Physician Quick Reference and on our website: **uams.health/md**

As we continue to navigate the effects of the COVID-19 pandemic, our team is dedicated to meeting your needs and have expanded the Quick Reference with additional materials. A trusted collection of COVID-19 resources are available at **uams.health/COVIDresources** and is in the Quick Reference. It includes the bi-weekly UAMS College of Public Health COVID-19 Modeling Update, WHO, CDC and others.

During 2021, in-person CE meetings will be limited so we are pleased to offer two FREE online CME series. **[UAMS LearnOnDemand.org](https://UAMS.LearnOnDemand.org)** has three years of multi-disciplinary topics presented by UAMS faculty you know. **MedNews Plus** is a national service with 500 hours AMA PRA Category 1™ CME credits for physicians annually and nearly 1,000 hours of CE for nurses.

Looking back, I'm proud of how our profession weathered 2020. We rose to the occasion, even when the needs kept shifting. The next twelve months will continue to be challenging as we navigate the new normal and adjust to our current work environments. We would like to thank you for your loyal support of this institution and its missions of research, education and service.

Rawle A Seupaul, MD

Physician Relations & Strategic Development Staff



Rawle A Seupaul, MD

Chief Clinical Officer
Stanley E. Reed Professor & Chair
Department of Emergency Medicine
Medical Director, Physician Relations & Strategic Development
(501) 686-8206

RASEupaul@uams.edu



Melanie Meyer, MEd

Director, Physician Relations & Strategic Development
(501) 686-8206

melanie@uams.edu



Carla Alexander, MEd

Manager, Physician Relations & Strategic Development
(501) 686-7934
carla@uams.edu



Byron Jarrett

Liaison, Physician Relations & Strategic Development
(501) 603-1440

byron@uams.edu



Wendy Sheridan

Liaison, Physician Relations & Strategic Development
(501) 686-6051

wendy@uams.edu

UAMS Key Telephone Numbers

Transfer Numbers

*UAMS Physician Call Center: 501-686-6080 or 866-UAMS-DOC

Appointment Center	526-1000	Speech Therapy Outpatient	686-8378
Hospital Department Phone Numbers		Speech Therapy Inpatient	686-6120
Administration	603-1452	Surgery (Info)	686-7653
Admissions	686-6236	Scheduling (Main OR)	614-2900 x1101/x1102
Admission Assessment Area	526-3661	Kidney Transplant	686-6640
Bed Control (Resource Mgmt.)	686-5641	Liver Transplant	686-8962
Breast Center	526-7300	PACU (recovery room)	526-3242
Care Management	686-5870	Arkansas Poison Center	1-800- 3POISON
Cath Lab	526-3280		
Clinical Lab (for results)	686-6230		
Dialysis	526-3750		
Emergency Department	214-2035	Nursing Units	
Hand Therapy Rehabilitation	686-6102	Emergency Room	686-7557
Hospital Operator	686-7000	A7 Antepartum	686-7750
Hospital Risk Management	603-1150	E4 Medical/Neuro ICU	526-0400
Interventional Radiology	686-6124	E5 LDR/Triage	526-0500
Medical Records	603-1520	E6 Perinatal Unit	526-0600
Occupational Therapy Inpatient	686-6120	E7 Medical Oncology Overflow	526-0700
One Day Surgery	320-7168	F7 Medical	526-1700
OR Front Desk	526-3200	Oncology Transplant	
Patient Relations/Advocate	296-1039	F4 Progressive Care	526-1400
Patient Safety	296-1039	F5 Neonatal ICU	526-1500
Pharmacy (inpatient)	686-6221	F6 Cardiac Progressive Clinic	526-1600
Pharmacy (outpatient)	686-5530	F8 Cardiac Progressive Care	526-1800
Physical Therapy Inpatient	686-6120	F9 Surgical Specialties	526-1900
Physical & Occupational Therapy Outpatient		H4 TSICU/CVICU	526-3400
At Spine Institute	661-7955	H5 Neonatal ICU	526-1500
At Aging Institute	526-5770	H6 Short Stay	526-3600
Physician Relations	603-1440	H7 Medical Oncology	526-3700
Pre-Op	526-3240	H8 Neurology / Neurosurgery	526-3800
PRI - Psychiatric Research Institute	526-8200	H9 Nephrology/Surgical Svs.	526-3900
Quality Management	296-1325		
Radiology	686-5750	Other/Campus	
Respiratory Care	686-6285	Chancellor's Office	686-5680
Risk Management	296-1039	Dean's Office	686-5350
Security (UAMS Police)	686-7777	Chief Clinical Officer	686-8113
		FGP Risk Management	614-2082
		IT Help Desk	686-8555
		Communications	686-8990
		Creative Services	686-5570
		Public Safety	686-7777

ALLERGY & IMMUNOLOGY

New Patients: 866-826-7362
or 501-526-1026

Referrals & Records Fax:
501-603-1538

Return Patients: 501-614-2948

AUDIOLOGY

501-686-5878, Option 1

Referrals & Records Fax:

501-603-1539

- Hearing Tests
- Balance Studies
- Hearing Aids

CARDIOLOGY

866-826-7362 or 501-526-1020

Referrals & Records Fax:

501-603-1538

Clinic: 501-686-5311

DERMATOLOGY

New Patients: 866-826-7362
or 501-526-1040

Referrals & Records Fax:

501-603-1538.

Return Patients: 501-686-5960

Dermatology Oncology:

501-686-8275

Dermatology Oncology Fax:

501-686-8640

EMERGENCY MEDICINE

Emergency Room: 501-526-2085

ENDOCRINOLOGY

866-826-7362 or 501-526-1022

Referrals & Records Fax:

501-603-1538

Return Patients: 501-296-1220
or 501-526-6990

Endocrine Surgery

New Patients: 501-526-1030

Return Patients: 501-686-6086

Referrals & Records Fax:

501-686-7280

Thyroid Oncology

New Patients: 501-686-8224

Return Patients: 501-686-8224,
option 1

FAMILY & PREVENTIVE MEDICINE

Family Medical Center:

501-686-6560

Student Employee Health:

501-686-6565

Referrals & Records Fax:

501-686-6234

GASTROENTEROLOGY

501-603-1900

Referrals & Records Fax:

501-603-1539

Advanced Endoscopy: 501-526-0865

Referrals & Records Fax:

501-603-1533

GENERAL INTERNAL MEDICINE

866-826-7362 or 501-526-1010

Referrals & Records Fax:

501-686-8668

GENETICS

501-526-4020

Referrals & Records Fax:

501-686-6234

GERIATRICS

501-686-6219

Referrals & Records Fax:

501-686-6234

HEMATOLOGY/ONCOLOGY

New or Returning Patients:

501-296-1200

Referrals & Records Fax: 501-603-1550

INFECTIOUS DISEASES

866-826-7362 or 501-526-1023

Referrals & Records Fax:

501-603-1538

Clinic: 501-603-1616

MOVEMENT DISORDER CLINIC**Clinic:** 501-526-5364**Referral Fax:** 501-603-1539**MULTIPLE MYELOMA****New Patients:** 501-686-8230**Return Patients:** 501-686-8230**Referrals & Records Fax:**
501-526-5906**NEPHROLOGY-KIDNEY CLINIC****New Patients:** 866-826-7362
or 501-526-1020**Referrals & Records Fax:**
501-603-1538**Return Patients:** 501-661-7910**NEUROLOGY****Epilepsy & Neurology Clinic**

501-686-5838

Referral & Referrals & Records Fax:
501-603-1539**NEUROSURGERY**

501-686-5270

Referral Fax: 501-686-7928**Back and Neck Care:** 501-686-5270**Referral Fax:** 501-686-7928**OBSTETRICS/GYNECOLOGY****ANGELS Call Center:** 501-526-7425
or 866-273-3835**UAMS Women's Clinic:** 866-826-7362
or 501-526-1050**Center for Gynecology**

866-826-7362 or 501-526-1050

Center for Vulvar Disorders

866-273-3835 or 501-526-7425

OB Genetics 866-273-3835
or 501-525-7425**Gynecologic Oncology****New Patients:** 501-686-5669
option 3**Returning Patients:** 501-686-5669
option 2**OPHTHALMOLOGY**

501-686-5822

Referrals & Records Fax:
501-526-6780**ORTHOPAEDICS
& SPORTS MEDICINE**

866-826-7362 or 501-526-1046

Referrals & Records Fax:
501-603-1541**Orthopaedic Oncology:**

501-296-1200

ACH patients 501-364-2946**OTOLARYNGOLOGY****ENT Clinic****New Patients:** 866-826-7362
or 501-526-1030**Referrals & Records Fax:**
501 603-1539**Return Patients:** 501-686-5878**Head & Neck Clinic****New Patients:** 501-296-1200**Return Patients:** 501-686-8224**OUTPATIENT THERAPY
SERVICES****LITTLE ROCK****Hand Therapy:** 501-686-6102**PT/OT at Spine Institute:**
501-661-7955**PT/OT at Institute on Aging:**
501-526-5770**Speech Pathology:** 501-686-8378**Speech Referrals & Records Fax:**
501-296-1160**OFF CAMPUS****PT/Hand Therapy at Autumn Road**
501-320-7777

OUTPATIENT THERAPY SERVICES *(continued)*

PT at Colonel Glenn 501-406-9234

PAIN CLINIC

Interventional: 501-686-8818

Referral & Referrals & Records Fax:
501-526-4216

PALLIATIVE/ONCOLOGY

New and Return Patients:
501-686-8738

PATHOLOGY

888-233-0327 or 501-603-1178

FNA Appointments: 501-686-5655

PEDIATRICS

800-777-7700 or 501-364-5901

PHYSICAL MEDICINE & REHABILITATION

501-221-1311

Referrals & Records Fax:
501-603-1541

PSYCHIATRIC RESEARCH CENTER

Center for Addictions Services and Treatment (CAST) Self-Referral:
501-526-8400

Child Study Center (ACH campus):
501-364-5150

Couples Center: 501-526-8200

Inpatient Psychiatry (UAMS Call Center): 501-686-6080

Interventional Psychiatry/ECT:
501-526-8603

Interventional Psychiatry/TMS:
501-526-8603

Neuropsychology: 501-526-8364
Referrals & Records Fax:

501-526-5296

STRIVE: 501-771-8261

Walker Family Clinic: 501-526-8200

Walker Family Clinic is not taking external, community referrals

Women's Mental Health Clinic:
Self Referral:

501-526-8201

Main Number: 501-526-8100

PULMONARY

866-826-7362 or 501-526-1024

Referrals & Records Fax:
501-603-1538

Clinic: 501-603-1400

RADIATION ONCOLOGY (ROC)

New patients: 501-664-4568

Referrals & Records Fax:
501-614-9880

Return Patients: 501-664-4568

RADIOLOGY

Inpatient, Bone Scan, MUGA:
501-686-6661

Outpatient Appointments:
501-686-6190

CT: 501-686-5777

Interventional Radiology:
501-686-6124

Mammography: 501-526-6100

MRI: 501-686-6033

Nuclear Medicine: 501-686-6661

Neuro-Interventional Radiology:
501-686-5745

PET: 501-526-6526 or 501-686-8424

Ultrasound: 501-686-5763

RHEUMATOLOGY

866-826-7362 or 501-526-1028

Referrals & Records Fax:
501-603-1541

Clinic: 501-603-1919

SLEEP CLINIC

Clinic: 501-686-6443

Referrals & Records Fax:
501-686-6452

SMARTCARE

866-826-7362 or 501-686-8749

Referrals & Records Fax:

501-603-1426

SURGERY

Pre-Op & Evaluation: 501-603-1211

Referrals & Records Fax:

501-686-7618

Breast Oncology: 501-296-1200

Referrals & Records Fax:

501-603-1550

Return Patients: 501-686-8522

Cardiothoracic Surgery:

501-296-1200

Referrals & Records Fax:

501-603-1538

Return patients: 501-686-8211

Cardiothoracic Surgery (ACH):

501-364-5858

Colorectal Surgery: 501-686-8211

Medical fax number: 501-603-1550

Endocrine Surgery New Patients:

501-526-1030

Return Patients: 501-686-6086

Referrals & Records Fax:

501-686-7280

General Surgery: 501-526-1030

Referrals & Records Fax:

501-603-1539

General Surgery (ACH):

501-364-1446

Lung Cancer new patient:

501-296-1200

Referrals & Records Fax:

501-603-1550

Return Patients: 501-686-8211

Plastic New Patients: 501-686-8711

Referrals & Records Fax:

501-603-1539

Return Patients: 501-526-1030

Plastic (ACH): 501-364-1195

Surgical Oncology - General:

501-296-1200

Medical fax number: 501-603-1550

Return Patients: 501-686-8211

Vascular Surgery: 501-686-6176

Referrals & Records Fax:

501- 686-5328

TRANSPLANT

1-800-552-8026

Kidney: 501-686-6640

Referrals & Records Fax:

501-686-6375

Liver: 501-686-8026

Referrals & Records Fax:

501-686-5215

UROLOGY

New patient: 501-526-1030

Referrals & Records Fax:

501- 603-1539

Return Patients: 501-686-6324

Genitourinary Oncology

New Patients: 501-296-1200

Return Patients: 501-526-1045

Urologic Prosthetics

New Patients: 866-826-7362 or 501-526-1030

Return Patients: 501-686-6324

To serve your Spanish-speaking patients, our main hospital phone line includes Spanish options. UAMS Appointment Center and clinics have access to Spanish interpreters.

NORTHWEST ARKANSAS CLINICS

ADULT GENETICS

Northwest

1125 N. College Avenue
Fayetteville, AR 72703

501-526-4020

Referrals & Records Fax:
501-526-4029

NORTH STREET

MARSHALLESE CLINIC

1125 N. College Avenue
Fayetteville, AR 72703

479-713-8700

Referrals & Records Fax:
479-713-8719

FAMILY MEDICAL CENTER

Fayetteville

1125 N. College Avenue
Fayetteville, AR 72703

479-521-8260

Referrals & Records Fax:
479-444-7820

ORTHOPAEDICS & SPORTS

MEDICINE CLINIC

Fayetteville

201 W. Van Asche Loop
Fayetteville, AR 72703

479-966-4491

Referrals & Records Fax:
479-966-4311

FAMILY MEDICAL CENTER

Springdale

601 W. Maple Ave., Ste. 102
Springdale, AR 72764

479-750-6585

Referrals & Records Fax:
479-872-0040

ORTHOPAEDICS & SPORTS

MEDICINE CLINIC - Lowell

519 Latham Drive
Lowell, AR 72745

479-334-7030

Referrals & Records Fax:
479-966-4311

KIDS FIRST

Lowell

519 Latham Drive
Lowell, AR 72745

479-750-0130

Referrals & Records Fax:
479-750-0937

OUTPATIENT THERAPY CLINIC

Fayetteville

1125 N. College Avenue
Fayetteville, AR 72703

479-713-8630

Referrals & Records Fax:
479-713-8639

NEIGHBORHOOD CLINIC

North Street

1125 N. College Avenue
Fayetteville, AR 72703

479-713-8701

Referrals & Records Fax:
479-713-8719

OUTPATIENT THERAPY CLINIC

- Springdale

2422 N Thompson St
Springdale, AR 72764

479-713-8630

Referrals & Records Fax:
479-713-8639

NORTHWEST ARKANSAS CLINICS *(continued)*

OUTPATIENT THERAPY SERVICES

**Train Recover Move FAYETTEVILLE
AND Train Recover Move ROGERS**
479-966-4491

HAND THERAPY - LOWELL
479-334-7030

PSYCHIATRIC RESEARCH INSTITUTE

1125 N. College Avenue
Fayetteville, AR 72703
479-713-8350

Referrals & Records Fax:
501-526-5296

SCHMIEDLING DEVELOPMENT CENTER - Lowell

519 Latham Drive
Lowell, AR 72745

479-750-0125

Referrals & Records Fax:
479-750-0323

UAMS REGIONAL PROGRAMS

UAMS North Central Regional Campus - Batesville

Family Medicine Residency Program
1993 Harrison Street
Batesville, AR 72501
870-698-9991

UAMS Northeast Regional Campus - Jonesboro

Family Medicine Residency Program
311 East Matthews
Jonesboro, AR 72401
870-972-0063

UAMS Northwest Regional Campus - Fayetteville

Family Medicine Residency Program
1125 N. College
Fayetteville, AR 72703
479-521-8260 (Fayetteville)
479-750-6585 (Springdale)

UAMS South Regional Campus Magnolia

Family Medicine Residency Program
1617 North Washington
Magnolia, AR 71753
870-234-7676

UAMS West Regional Campus Fort Smith

Family Medicine Residency Program
612 South 12th Street
Fort Smith, AR 72901
479-785-2431

UAMS South Central Regional Campus - Pine Bluff

Family Medicine Residency Program
1601 West 40th Avenue
Pine Bluff, AR 71603
870-541-7611

UAMS East Regional Campus Helena

1393 Highway 242 South
Helena, AR 72342
870-572-2727

UAMS Southwest Regional Campus - Texarkana

Family Medicine Residency Program
3417 U of A Way
Texarkana, AR 71854
870-779-6000

Physician Call Center

Transfers & Consults

Direct Number to the Physician Call Center: 501-686-6080

The **Physician Call Center** is staffed by experienced telephone triage RNs - 24/7, 365 days of the year. The Call Center nurse will ensure timely, appropriate consults for your patients, assist you with transfer requests and keep you updated when patient transfers are delayed.

You may still call 866-826-7362 or 501-686-8000 to access the Call Center, the Appointment Center, hospital operators and other areas.

Online Appointment Registration

Faster, Easier, More Convenient Patient Appointment Registration



Now you can request appointments for your patients online. No more phone calls, transfers or waiting for a call back.

- Go to the online appointment request form at **uams.health/refer**
- Complete the form and submit.

The Appointment Center will fax you within 5 business days with the appointment information for the patient.

Website for Referring Physicians

Site includes information on:

- Appointments & Transfers
- CME - LearnOnDemand & MedNews Plus
- *The Consult*
- Coronavirus Resources
- EpicCare Link
- Referring Physician Quick Reference
- Managed Care
- Maps
- Online Appointment Request
- Physician Call Center
- Physician Directory
- Physician Recruitment & Provider Placement
- Physician Relations Staff
- UAMS Library

uams.health/md

EpicCare Link

It is free of charge, easy to sign up and convenient to use.

EpicCare Link is a secure, web-based portal for referring physicians to track patient progress and treatment while at UAMS and provides secure messaging for you to offer electronic consults. First Access allows users to add patients to their accounts. Account expiration has been updated from 90 days to 180 days to make it more user-friendly.

How to register:

- 1 Visit **uams.health/EpicCare**
- 2 Complete the EpicCare Link access request form
- 3 UAMS IT will e-mail your user name and password

SHARE

UAMS is pleased to announce its continued partnership with the Arkansas Department of Health, Office of Health Information Technology in facilitating the implementation of SHARE (the Arkansas State Health Alliance for Records Exchange), the only statewide health information exchange (HIE).

SHARE securely gathers your medical information from different health care providers and creates a more complete picture of a patients' health. Our goal is to improve the quality of health for Arkansas by enabling a more effective use of secure electronic health information exchange while improving the delivery of health care services.

Anne Santifer, Executive Director
SHAREhealth@arkansas.gov
501-410-1999

For more information about SHARE and how to sign up, go to: **sharearkansas.com**.

Coronavirus Resources for Providers

UAMS Health has compiled a trusted collection of resources on COVID-19 for health care providers available at uams.health/COVIDresources

Examples include:

- Clinical information for COVID-19 in pregnancy
- Donning and doffing procedures
- Extended use and limited reuse of PPE and N95 masks
- Guidelines for risk stratification, testing, placement and isolation
- Outpatient clinical testing guidance
- Updated screening locations and access times
- Women's health telemedicine toolkit
- WHO and CDC resources
- UAMS College of Public Health COVID-19 Modeling Update

UAMS continues to offer telehealth screenings at uams.health/telehealth.

Direct patients to call the UAMS screening hotline at **1-800-632-4502**.

The drive-through screening location on UAMS main campus is at the corner of Shuffield Drive & Jack Stephens Drive in Little Rock. Hours are listed at uams.health/covid19.

Learn More: uams.health/covid19 healthy.arkansas.gov
cdc.gov | who.int

Preceptor Opportunities

We need you!



- Are you board certified?
- Do you enjoy teaching medical students?
- Do you want to train your next partner?

PARTICIPATING PHYSICIANS RECEIVE:

- 20 hours AAFP prescribed credit
- UAMS adjunct faculty appointment
- Free online CME through UAMS LearnOnDemand
- Digital access to the UAMS Library, UpToDate, PubMed, Medline and more

For more information or to sign up:

Jessica Bursk

JLBURSK@UAMS.EDU | 501-686-5260

AR-Connect

A VIRTUAL MENTAL HEALTH AND SUBSTANCE ABUSE PROGRAM

UAMS AR-Connect is there for you, whenever you need it.

The University of Arkansas for Medical Sciences' AR-Connect call center is open 24 hours a day, seven days a week, answering the needs of Arkansans dealing with any number of mental health issues. The caller is evaluated by a nurse triage team and, if needed, contacted by another medical professional within 24 hours. To maintain social distancing, the contact will either be by phone or live video, depending on the patient's preference. The virtual clinic operates Monday through Friday, 8 a.m. to 5 p.m.

AR-Connect's clinical team has been trained to recognize the needs of those dealing with mental issues, whether they are a single parent struggling to support their family or a medical professional on the front lines of the COVID-19 pandemic.

The goal of AR-Connect is to help those Arkansans needing immediate care get the assistance they need and eventually connect them with treatment options available in their local area. Health insurance is not required to access AR-Connect's mental-health professionals and patients will not be responsible for any payments outside of what is covered by their insurance plan.

For more information, email ARconnect@uams.edu or visit uams.health/mentalhealth

This material was made possible by Grant Number 1H79FG000240-01 from the Substance Abuse and Mental Health Services Administration (SAMHSA) and the Arkansas Department of Human Services Division of Aging, Adult and Behavioral Health Services (DAABHS).

Call (501) 526-3563 or toll-free at (800) 482-9921 to speak to a medical professional.

Library Databases & Resources

Do you need to search the current clinical literature or find information on clinical trials? The following databases are available free online:

- **MEDLINE via PubMed.gov** – includes over 30 million citations in biomedical & life sciences journal literature. Indexed records go back to 1946. Some older records may go back to late 1700s. Some free full text is available.
- **PDQ (Physicians Data Query) via Cancer.gov** – comprehensive evidence-based information about cancer treatment, screening, prevention, genetics and supportive care plus over 5,000 open NCI clinical trials. Provides a genetic services directory. Most summaries available in Spanish. **cancer.gov/publications/pdq**
 - **A to Z List of Summaries** at: **cancer.gov/publications/pdq/information-summaries/adult-treatment**
- **ClinicalTrials.gov** – provides current information for locating federally and privately supported clinical trials for diseases and conditions in humans. Includes trial's purpose, who may participate, locations (U.S. and International) and contacts. Filters for finding studies with results are available.
- **Drug Information** – National Library of Medicine – provides multiple drug-related databases including:
 - **Drug Information Portal** [81,479 drugs from clinical trial stage to marketplace] **druginfo.nlm.nih.gov/drugportal/drugportal.jsp**
 - **Drugs, Herbs & Supplements** [effectiveness, dosage, & drug interactions for dietary supplements & herbal remedies] **medlineplus.gov/druginformation.html**
 - **PillBox** [pill identification w/ imprint, shape, color, etc.] On January 29, 2021 the National Library of Medicine's Pillbox program will be retired. For further information please see the *NLM Technical Bulletin*.
 - **DailyMed** [FDA labels for 134,697 marketed drugs] **dailymed.nlm.nih.gov/**

ADDITIONAL DATABASES

For a list of free biomedical resources for Arkansas health professionals, see: **libguides.uams.edu/services-to-state/ark-healthcare-professionals**

UAMS Library's COVID-19 Resources page (est. 1-2020) provides information for health professionals, librarians, educators, researchers, the public and more.

FULL TEXT ARTICLES

Do you need free full text articles or the ability to order documents from a medical library? The following options are available:

Free Full Text:

- **PubMed** – some free full text articles ARE available via PubMed Central buttons. Use the free full text filter on the left navigation bar. **pubmed.gov**
- **Directory of Open Access Journals** – covers free, full text, quality-controlled scientific and scholarly journals from 123 countries. Currently there are 15,632 journals under 20 categories. The Medicine section has 16 subsections including GYN/OB, internal medicine, pediatrics, pharmacy and surgery. **doaj.org/**

Full Text Access

- **PubMed** – many links to publishers sites [usually require paid subscription].
- **Loansome Doc (LD)** – the electronic document ordering system in PubMed – must have an account with the UAMS Library or a UAMS Regional Center library. (Fee-based.) Includes Interlibrary Loans (ILLs) from other medical libraries outside of Arkansas. UAMS Library's ILL/LD Office is: 501-686-6744. See regional center map and contact information at: **libguides.uams.edu/services-to-state/regional-center-libraries**

TRAINING

Would you like to learn how to use PubMed & other clinical and patient education resources to the best of your ability? The UAMS Library offers free training for individuals or groups on these resources.

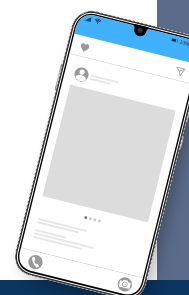
Please contact Education & Research Services at: 501-686-6734.

Remote training sessions are available viz Zoom. You can also request a class via: **uams.libwizard.com/f/class-instruction-request**

TIME A PROBLEM?

If you don't have time to do searches yourself or can't find what you're looking for, contact the UAMS Librarians who can provide FREE expert literature searches. Results include citations and abstracts. We also provide free consultations to help with search strategies, auto alerts or reference questions. **Call 501-686-6734 or email us at: LibraryReferenceDesk@uams.edu.**

Follow us on Facebook or Twitter for news about the Library and biomedical information resources.





FREE ONLINE CME

LearnOnDemand Tuesday Noon CE Series

This weekly, multidisciplinary Tuesday Noon teleconference focuses on chronic disease, healthcare trends and interprofessional collaboration. All disciplines are welcome and encouraged to participate.

LearnOnDemand (LOD), a product developed under the Institute for Digital Health & Innovation (IDHI), allows users to track all their educational hours and credits earned inside or outside the program.

LearnOnDemand.org is the website portal that allows health care professionals, at any time, to hear lectures and take classes online to earn continuing education (CE) credits.

The site also is compliant with the CE requirements for all three national accrediting organizations for physicians, nurses and pharmacists. Among the other health professions to which LOD is approved to offer continuing education are health educators, registered dietitians, case managers, lactation consultants, physical therapists, respiratory therapists and emergency medical technicians.

Many courses on LearnOnDemand.org have been approved for *AMA PRA Category 1 Credit™*.

For information regarding LearnOnDemand and what it can offer you contact: idhi@uams.edu | 1-855-234-3348

Join E-Newsletter for Latest From UAMS, MedNews Plus

UAMS provides an email news service for busy medical professionals called **MedNews Plus**.

Sign up for news and information from UAMS and the latest breaking medical news and conference coverage from across your specialty. Updates include new procedures and technology at UAMS, access to nearly 800 hours of FREE AMA PRA Category 1 Credit™ and news of interest to physicians.

MedNews Plus provides medical news pulled from over 300 sources, including over 100 of the top medical journals and over 100 of the top medical meetings that take place around the world each year. It is available for all medical professionals, including practice managers, who can sign up as a “health administrator” and follow the “practice management” topic. Subscribers receive a morning email only when there is breaking medical news in the specialty(s) to which they subscribe. You can edit your subscription or unsubscribe at any time.

To register, visit UAMS.MedNewsPlus.com

Physician Recruitment & Provider Placement



Physician Recruitment & Provider Placement

The UAMS Physician Recruitment & Provider Placement Program has a team of Placement Specialists dedicated to serving the recruitment needs of UAMS, UAMS Regional Programs and our partner communities by:

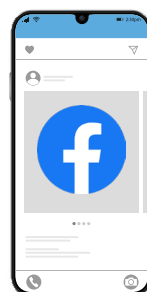
- Assisting with the development of detailed profiles of available opportunities
- Promoting practice opportunities to UAMS residents and practicing physicians
- Utilizing national and local internet job boards
- Attending regional and virtual career fairs
- Referring candidates to partnering communities
- Providing professional development training to community hospitals and providers through LOD

Contact Carla Alexander at 501-686-7934 or carla@uams.edu for details on the MedJobArkansas Contract.

Candidate Opportunities & Resources

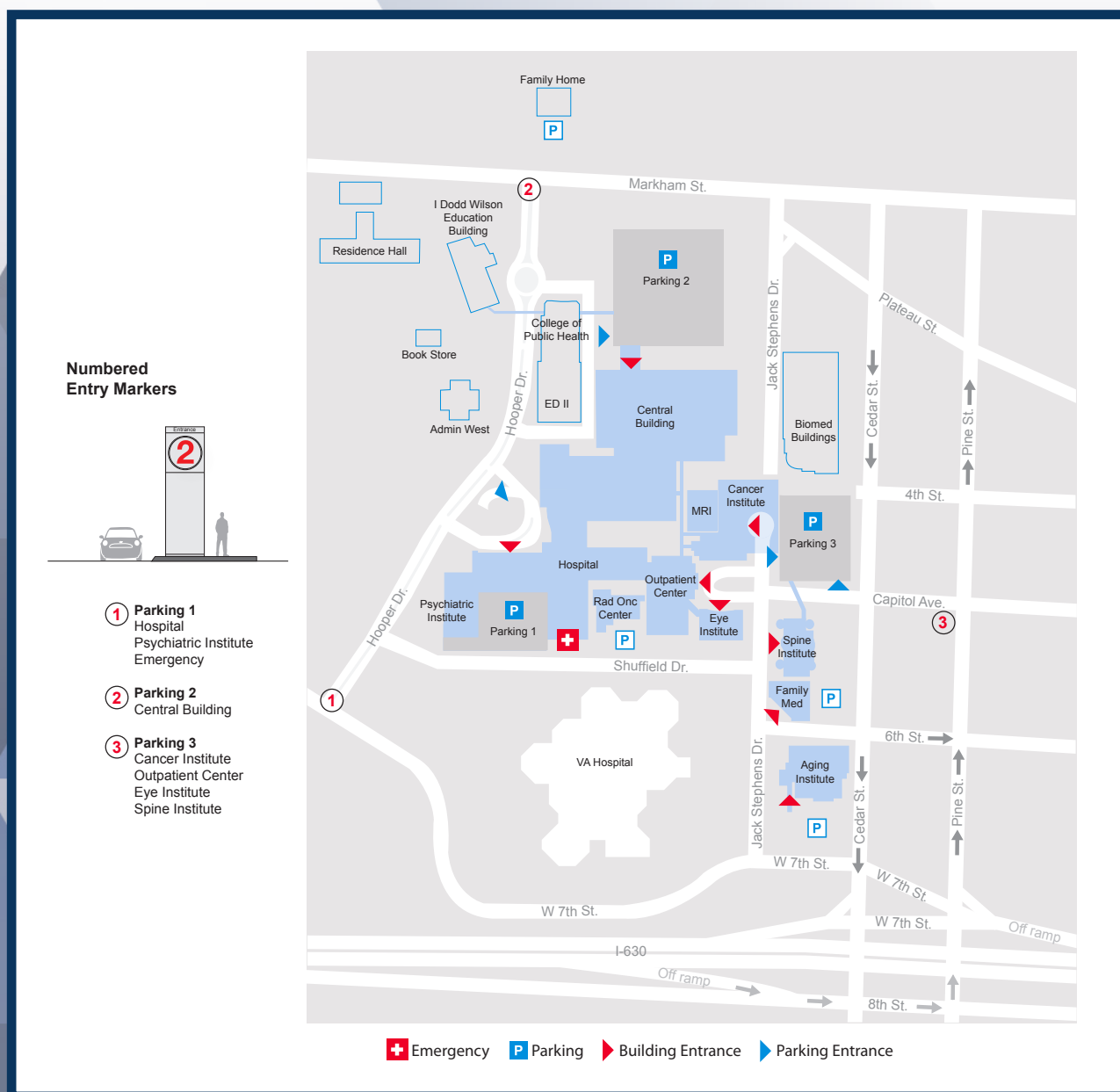
The Physician Recruitment & Provider Placement Program is available to assist candidates with professional development training and provide practice opportunities available throughout Arkansas.

Find detailed opportunities and register on the Job Board at medjobarkansas.com. CV tips, templates, and samples are available on the site.



Follow us on Social Media





For more UAMS locations and maps, please visit uams.health/Maps



UAMS®