

BETTY CASALI TRANSFORMATIONAL LEADERSHIP

The recipient of The Betty Casali Transformational Leadership Award reflects - by example - specific qualities that resulted in empowering or encouraging others to achieve a positive outcome. This leader utilizes the following four core components of transformational leadership to achieve results.

1. Individual Consideration
2. Intellectual Stimulation
3. Inspirational Motivation
4. Idealized Influence



Audra Arant, APRN
*Senior Director,
Surgical Specialty
Service Line*



Cynthia Brown, RN
*Executive Nursing
Director,
Musculoskeletal
Service Line*



Angela Craig, RN
*Nursing Director
ADON/Float Pool*



Philmar Mendoza-
Kabua, RN
*Project Manager
ICHI - Maternal Health*

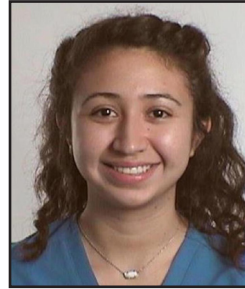
BETTY CASALI TRANSFORMATIONAL LEADERSHIP

The recipient of The Betty Casali Transformational Leadership Award reflects - by example - specific qualities that resulted in empowering or encouraging others to achieve a positive outcome. This leader utilizes the following four core components of transformational leadership to achieve results.

1. Individual Consideration
2. Intellectual Stimulation
3. Inspirational Motivation
4. Idealized Influence



Sandra Meredith-Neve,
RN, BScN, CPN
*Senior Executive
Nursing Director
Ambulatory Care
Service Lines*



Hellen Palencia, RN,
*Clinical Services
Manager,
Emergency Medicine
Service Lines*



Melissa Ann Tillman, RN
*Clinical Services Manager,
Neurosciences
Service Line*



Lavonia Walker, RN
*Assistant Nursing
Director,
Periop Service Patient
Care*